

## Dorchester Mews New Malden KT3

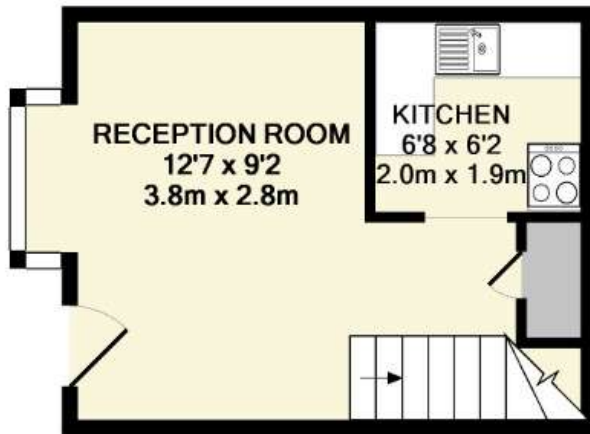


- One Double Bedroom House
- Living Room. Separate Kitchen
- Private Residents Parking
- Close to Amenities

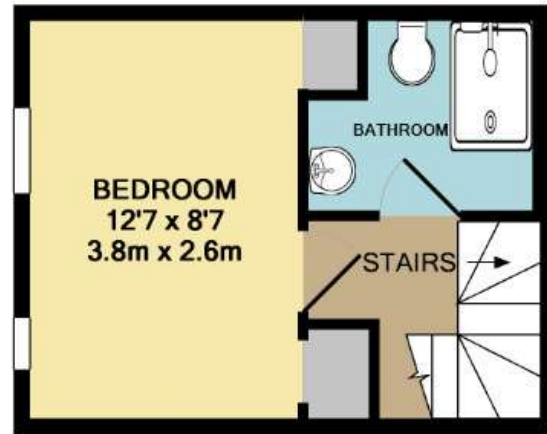
**Price £1,300 pcm**

Located in a popular development within easy reach of the station and High Street, a modern one bedroom house which is well-presented throughout. The accommodation comprises a living room and separate, fitted kitchen on the ground floor and upstairs there is a good size double bedroom and a modern shower room and there is also private parking within the development. This property is ideal for a single person or a couple, comes unfurnished and is available early-mid August. Security deposit £1,500 (based on the asking price). Council tax band C. EPC rating C





GROUND FLOOR  
APPROX. FLOOR  
AREA 207 SQ.FT.  
(19.3 SQ.M.)



1ST FLOOR  
APPROX. FLOOR  
AREA 199 SQ.FT.  
(18.5 SQ.M.)

TOTAL APPROX. FLOOR AREA 407 SQ.FT. (37.8 SQ.M.)

Whilst every attempt has been made to ensure the accuracy of the floor plan contained here, measurements of doors, windows, rooms and any other items are approximate and no responsibility is taken for any error, omission, or mis-statement. This plan is for illustrative purposes only and should be used as such by any prospective purchaser. The services, systems and appliances shown have not been tested and no guarantee as to their operability or efficiency can be given  
Made with Metropix ©2016





