

St Anns Hill London SW18

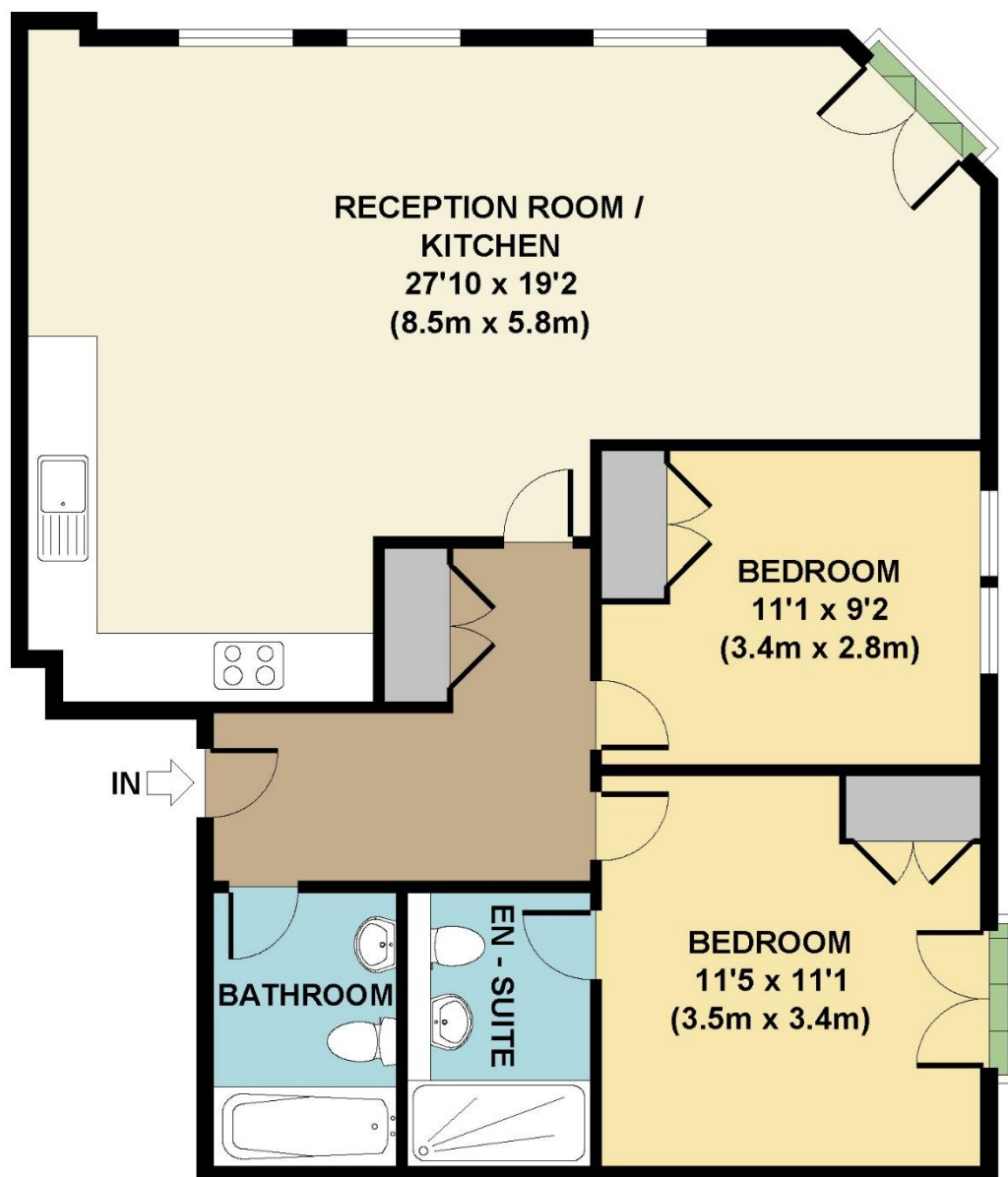


- **Two Double Bedrooms**
- **Large Open Plan Reception/Kitchen**
- **Bathroom plus En Suite**
- **Central Location**
- **Excellent Condition**
- **Available Mid-May**

Price £2,450 pcm

A superb first floor apartment comprising a large open-plan living room/kitchen, a master bedroom with en suite and a further double bedroom and a second bathroom. The property is located close to the Southside Centre with its wide variety of shops and is just a short stroll to Wandsworth Town Station. The high quality of the build shines through and the flat has a kitchen with built-in appliances and under-floor heating. The property has been finished to an exceptional standard and is available furnished from beginning of August EPC rating B. Council tax band D. Security deposit £2,826 (this will change if a different price is agreed)





**FIRST FLOOR
GROSS INTERNAL
FLOOR AREA 829 SQ FT**

APPROX. GROSS INTERNAL FLOOR AREA 829 SQ FT / 77 SQ M
Floorplans are for identification and guideline purposes only, not to scale.
Compliant with RICS code of measuring practice.
Floorplans supplied by www.draftingfloorplan.com