

## Grafton Road New Malden KT3



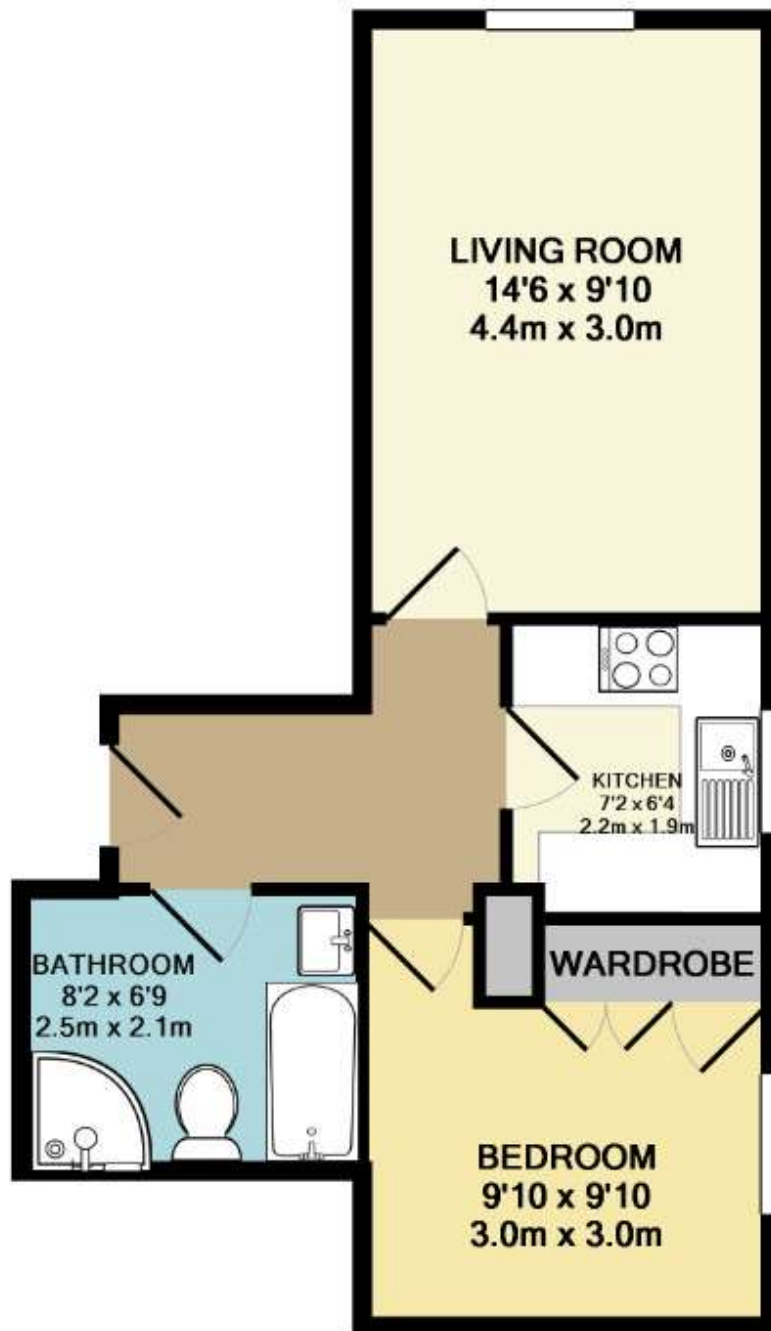
- **One Bedroom Apartment**
- **Private Parking to Rear**
- **Very Central Location**
- **No Onward Chain**

**Price £285,000**

Located on the first floor of this small modern block, a good size apartment offered for sale with no forward chain. The property is well presented throughout and comprises a good size living room, double bedroom with built-in wardrobes a fitted kitchen and bathroom with bath and separate shower and it also has the added benefit of a private parking space to the rear. EPC rating C. Both the High Street and station are very close by and the flat would make both a great first time buy or an excellent rental investment. Disclaimer: This property is owned by a Director of Groves Estate Agents.







**TOTAL APPROX. FLOOR AREA 405 SQ.FT. (37.6 SQ.M.)**

Whilst every attempt has been made to ensure the accuracy of the floor plan contained here, measurements of doors, windows, rooms and any other items are approximate and no responsibility is taken for any error, omission, or mis-statement. This plan is for illustrative purposes only and should be used as such by any prospective purchaser. The services, systems and appliances shown have not been tested and no guarantee as to their operability or efficiency can be given

Made with Metropix ©2012