



Beech Grove New Malden KT3



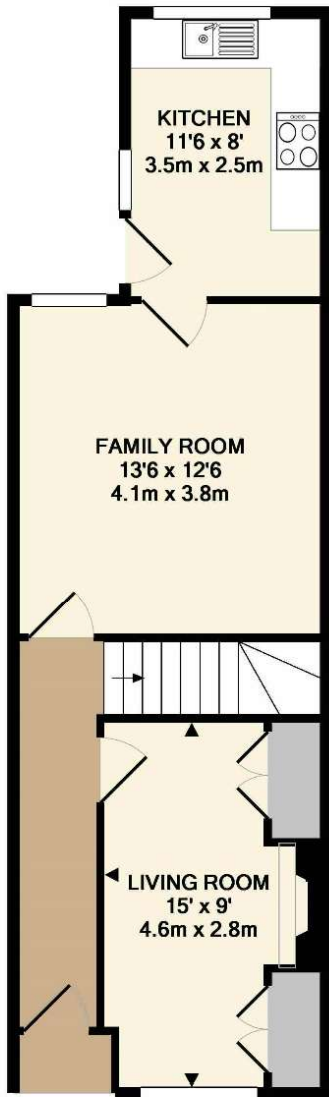
- **Semi Detached Period House**
- **South Facing Garden**
- **Superb Master Bedroom and En Suite**
- **Groves Location**

Price £675,000

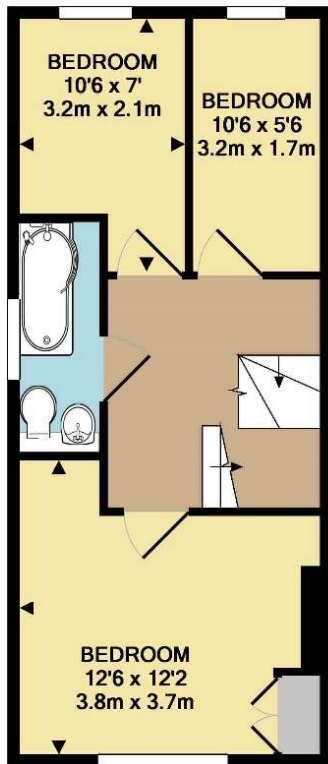
A lovely four bedroom semi-detached period house comprising a front reception room with feature fireplace, a second reception room leading to a modern fully fitted kitchen with access onto the south facing garden. On the first floor there is a large double and two single bedrooms together with a family bathroom. On the second floor there is a superb master bedroom with large en suite with walk in shower. The property is located in a popular part of New Malden in the "Groves" within easy walking distance of New Malden Station and High Street. It is also in the catchment for excellent schools. EPC rating D.



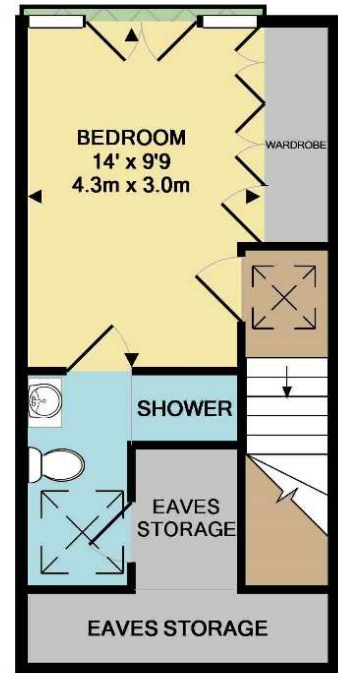




GROUND FLOOR
APPROX. FLOOR
AREA 489 SQ.FT.
(45.5 SQ.M.)



1ST FLOOR
APPROX. FLOOR
AREA 370 SQ.FT.
(34.4 SQ.M.)



2ND FLOOR
APPROX. FLOOR
AREA 324 SQ.FT.
(30.1 SQ.M.)

TOTAL APPROX. FLOOR AREA 1183 SQ.FT. (109.9 SQ.M.)

Whilst every attempt has been made to ensure the accuracy of the floor plan contained here, measurements of doors, windows, rooms and any other items are approximate and no responsibility is taken for any error, omission, or mis-statement. This plan is for illustrative purposes only and should be used as such by any prospective purchaser. The services, systems and appliances shown have not been tested and no guarantee as to their operability or efficiency can be given

Made with Metropix ©2019