

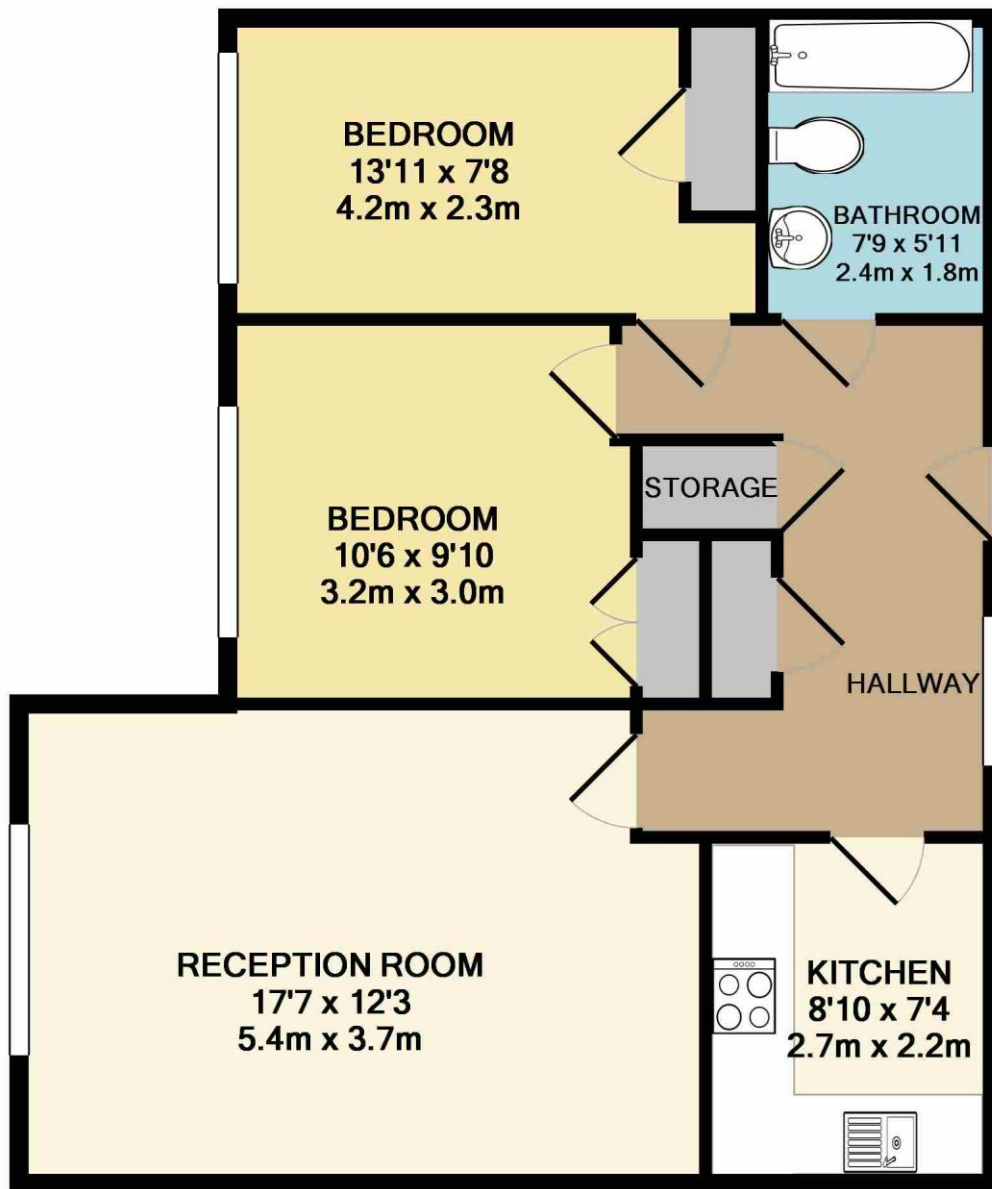
## The Avenue Worcester Park KT4



- **Two Bedrooms**
- **Garage**
- **Off-Street Residents Parking**
- **Nest Thermostat**

### **Price £1,500 pcm**

This spacious and well presented two bedroom flat is situated in a great location; walking distance to Worcester Park station and local shops. The property comprises a large separate reception room, a white suite bathroom, a modern fully fitted kitchen which has been finished to an exceptional standard and two double bedrooms, both of which have built in wardrobes. There is an additional benefit of an intercom security entry system, good storage throughout the property as well as a garage, communal gardens and off-street residents parking. The property is available from end of January and unfurnished. EPC rating C. Security Deposit ( based upon an asking price offer) £1,846. Council Tax Band C.



**TOTAL APPROX. FLOOR AREA 650 SQ.FT. (60.4 SQ.M.)**

Whilst every attempt has been made to ensure the accuracy of the floor plan contained here, measurements of doors, windows, rooms and any other items are approximate and no responsibility is taken for any error, omission, or mis-statement. This plan is for illustrative purposes only and should be used as such by any prospective purchaser. The services, systems and appliances shown have not been tested and no guarantee as to their operability or efficiency can be given

Made with Metropix ©2019