

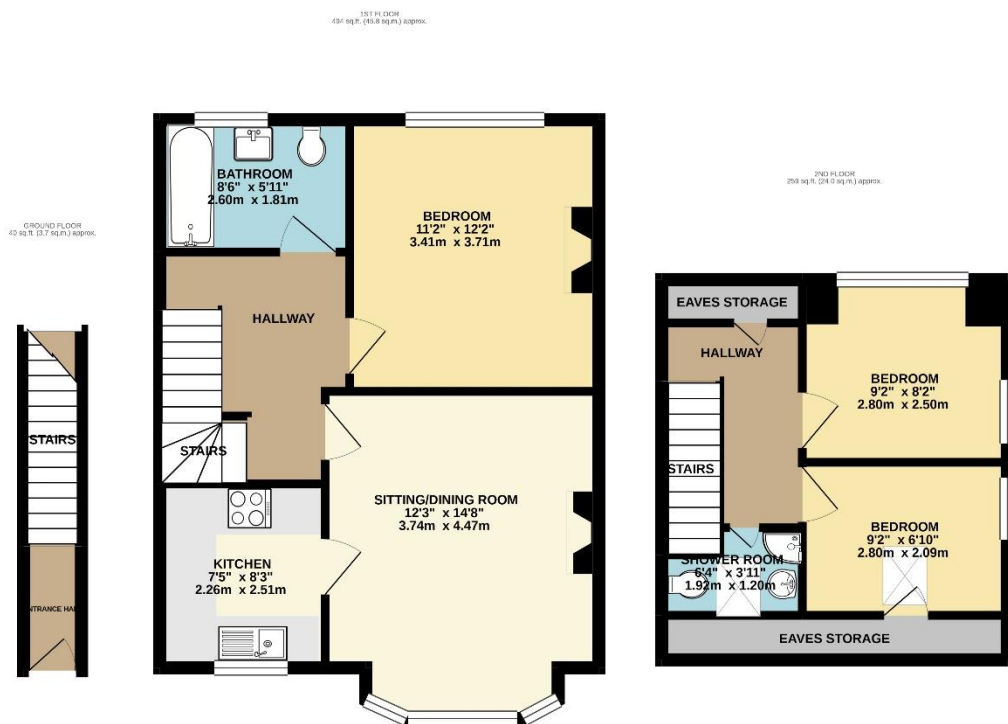
Westbury Road New Malden KT3



- **Three Bedrooms**
- **Two Bathrooms**
- **Close to good Transport Links**
- **Off-Street Parking**

Price £2,000 pcm

A stunning three bedroom split-level maisonette over three floors and with off-street parking. The property is tastefully presented throughout and offers excellent accommodation; the first floor comprises a large reception room with a separate fitted kitchen including dishwasher and dryer, a good size double bedroom and the main bathroom. There are a further two good size bedrooms on the top floor with a shower room and eaves storage. The property is available in March and unfurnished. EPC rating D. Council Tax Band D. Security Deposit £2,307 (based upon an asking price offer)



TOTAL FLOOR AREA: 792 sq.ft. (73.6 sq.m.) approx.

Whilst every attempt has been made to ensure the accuracy of the floorplan contained here, measurements of doors, windows, rooms and any other items are approximate and no responsibility is taken for any error, omission or mis-statement. This plan is for illustrative purposes only and should be used as such by any prospective purchaser. The services, systems and appliances shown have not been tested and no guarantee as to their operability or efficiency can be given.

Made with Metropix ©2020





