

Queens Road New Malden KT3

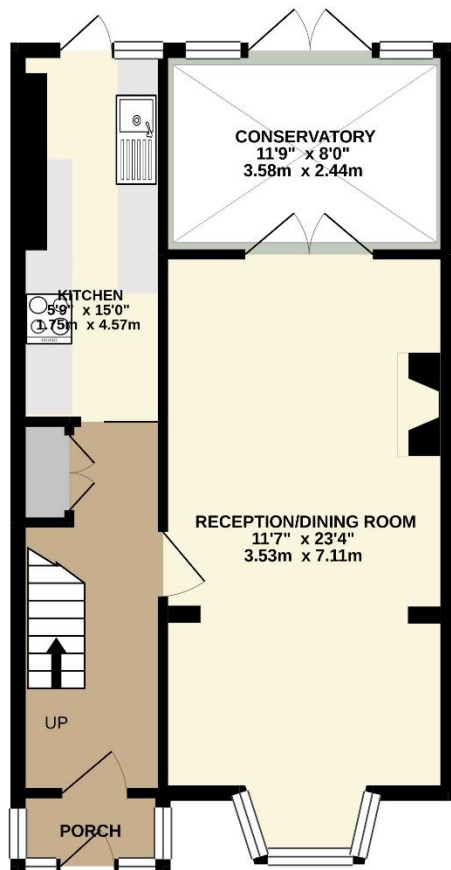


- **Three Bedrooms**
- **Conservatory**
- **Off-Street Parking**

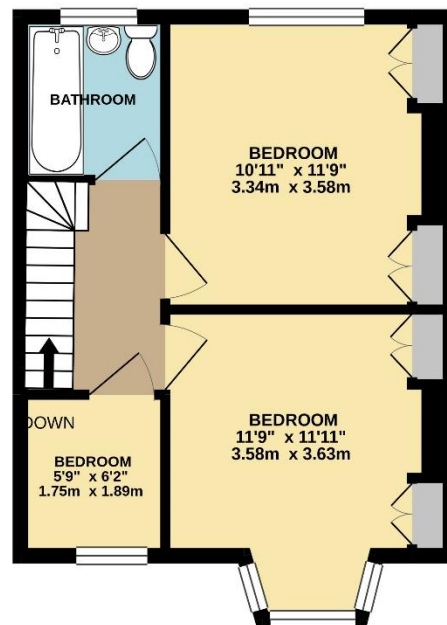
Price £2,200 pcm

This terraced three bedroom property is ideally located for great transport links as well as outstanding local schools. There is a lovely reception room, extending in to a conservatory with direct access onto the rear garden. The separate kitchen also leads out to the garden. Upstairs, there are two double bedrooms with built in wardrobes, a good size single bedroom and family bathroom. This property also benefits from off street parking for one car. Available end of January and part-furnished. EPC rating D. Council Tax Band D. Security Deposit based upon an asking price offer £2,538.

GROUND FLOOR



1ST FLOOR



TOTAL FLOOR AREA : 966sq.ft. (89.7 sq.m.) approx.

Whilst every attempt has been made to ensure the accuracy of the floorplan contained here, measurements of doors, windows, rooms and any other items are approximate and no responsibility is taken for any error, omission or mis-statement. This plan is for illustrative purposes only and should be used as such by any prospective purchaser. The services, systems and appliances shown have not been tested and no guarantee as to their operability or efficiency can be given.
Made with Metropix ©2020



