

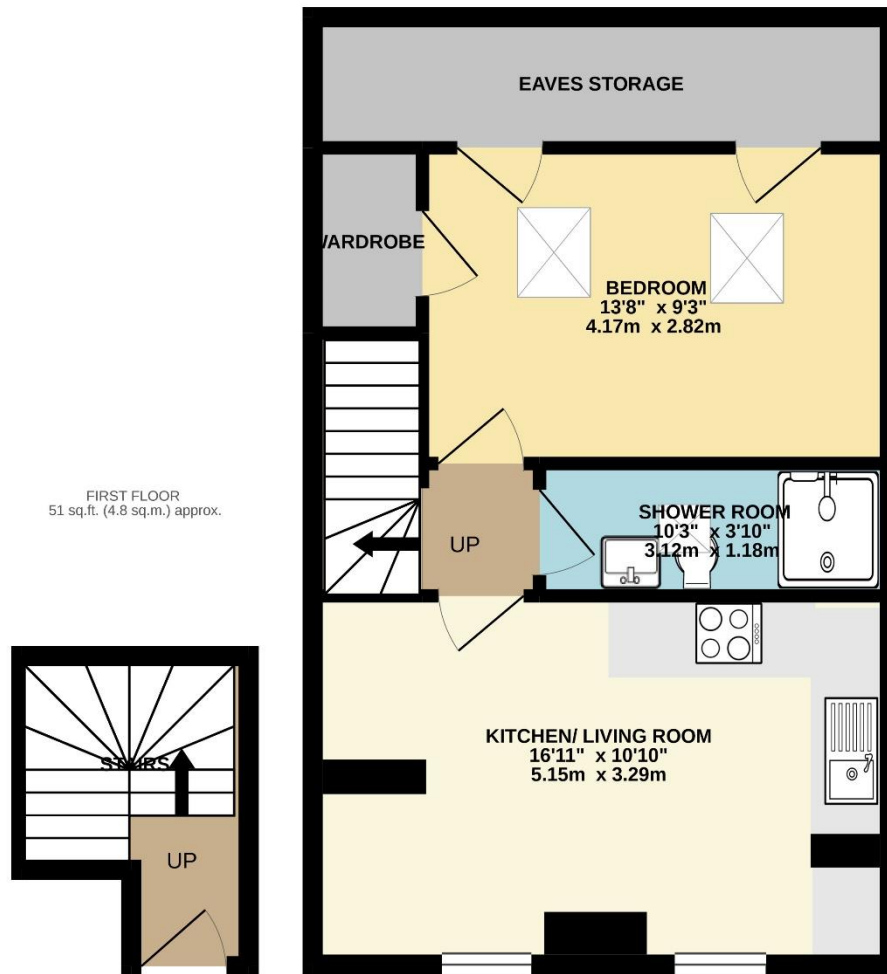
## Lime Grove New Malden KT3



- **One Bedroom**
- **`Groves` area of New Malden**
- **Close to Town Centre**
- **Access To Station**

**Price £1,200 pcm**

A lovely, well presented second floor flat in a converted period house providing light accommodation and comprising a good size bedroom with ample built in storage, and eaves storage, a good size bathroom, and a fully fitted kitchen and living area. This property is ideally situated for all the local amenities, being just a few minutes walk from both New Malden High Street and Station. The property is available mid-late April and comes unfurnished. EPC rating C. Security Deposit £1,384. Council tax band B.



TOTAL FLOOR AREA : 511 sq.ft. (47.5 sq.m.) approx.

Whilst every attempt has been made to ensure the accuracy of the floorplan contained here, measurements of doors, windows, rooms and any other items are approximate and no responsibility is taken for any error, omission or mis-statement. This plan is for illustrative purposes only and should be used as such by any prospective purchaser. The services, systems and appliances shown have not been tested and no guarantee as to their operability or efficiency can be given.  
Made with Metropix ©2020



