



## George Road New Malden KT3



- **Two Double Bedroom End of Terrace Period House**
- **West Facing Garden**
- **Modern Fitted Bathroom**
- **Within the Catchment for Excellent Schools**

**Price £515,000**

A lovely two double bedroom end of terrace period house located within the catchment for excellent schools and within easy walking distance of New Malden High Street and Station. The property comprises an entrance hall opening into a through reception with square bay, a fitted kitchen leading to a utility room and downstairs W.C. There is access from the kitchen to the private west facing garden with a large storage area which once housed a garage and has access from Queens Road. On the first floor is a large master bedroom, a second double bedroom and good size modern family bathroom. EPC rating D.

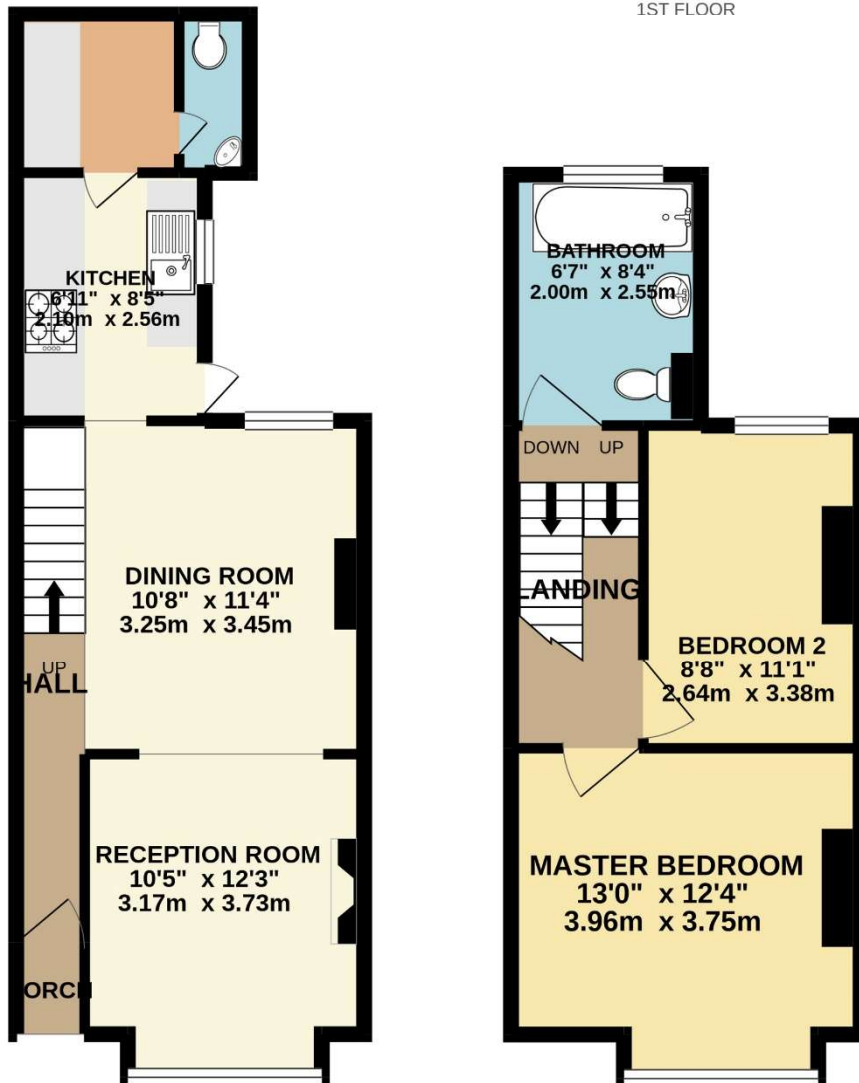




GROUND FLOOR



1ST FLOOR



TOTAL FLOOR AREA : 811 sq.ft. (75.3 sq.m.) approx.

Whilst every attempt has been made to ensure the accuracy of the floorplan contained here, measurements of doors, windows, rooms and any other items are approximate and no responsibility is taken for any error, omission or mis-statement. This plan is for illustrative purposes only and should be used as such by any prospective purchaser. The services, systems and appliances shown have not been tested and no guarantee as to their operability or efficiency can be given.

Made with Metropix ©2021