



Groves Residential

Burlington Road New Malden KT3



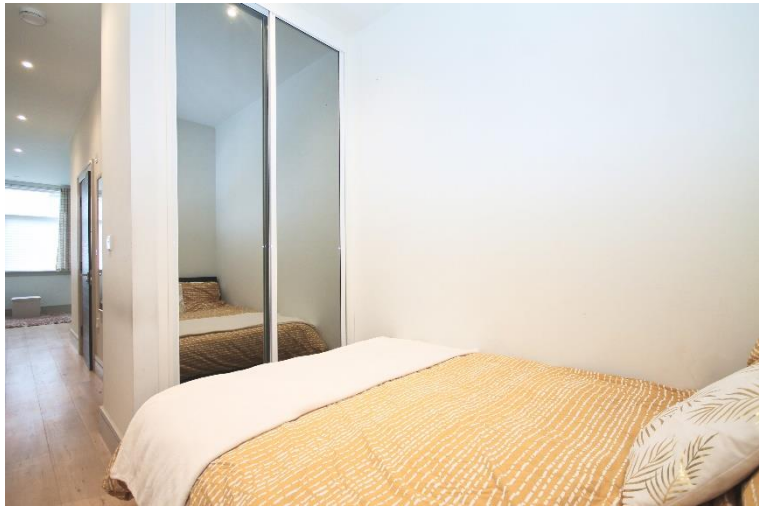
- **Ground Floor Studio Apartment**
- **Separate Bedroom Area**
- **Private Residents Parking**
- **Long Lease**

Price £232,500

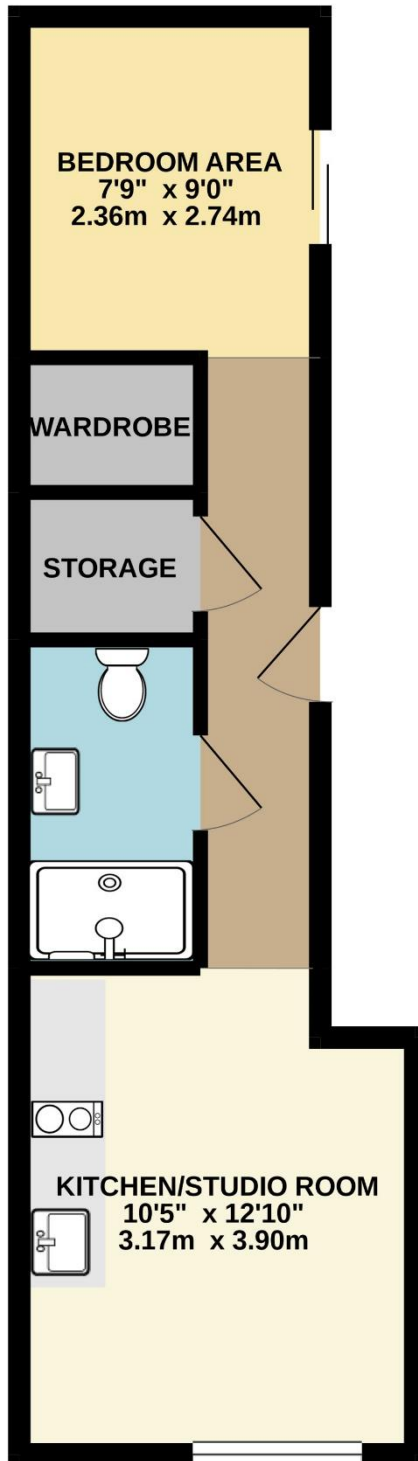
Set in this very modern building which was converted into apartments just a few years ago, a beautiful ground floor studio flat offering excellent accommodation. The property comprises a studio room with a living area and a modern kitchen with Siemens appliances including a dishwasher and a washer/dryer and the hall leads through to a smart shower room, a large storage cupboard and then a separate bedroom area with built-in wardrobes; there is also a private parking space (with the option to rent further spaces) and the building is accessed via a secure entryphone system. New Malden High Street is close by and there is also easy access to Raynes Park as well as excellent transport facilities and viewing are highly recommended. EPC rating C.

11 High Street New Malden Greater London KT3 4DQ
Tel: 02089490094 | Email: mail@grovesresidential.com
<https://www.grovesresidential.com>





GROUND FLOOR
328 sq.ft. (30.5 sq.m.) approx.



TOTAL FLOOR AREA : 328 sq.ft. (30.5 sq.m.) approx.

Whilst every attempt has been made to ensure the accuracy of the floorplan contained here, measurements of doors, windows, rooms and any other items are approximate and no responsibility is taken for any error, omission or mis-statement. This plan is for illustrative purposes only and should be used as such by any prospective purchaser. The services, systems and appliances shown have not been tested and no guarantee as to their operability or efficiency can be given.
Made with Metropix ©2021