

Ancaster Crescent New Malden KT3

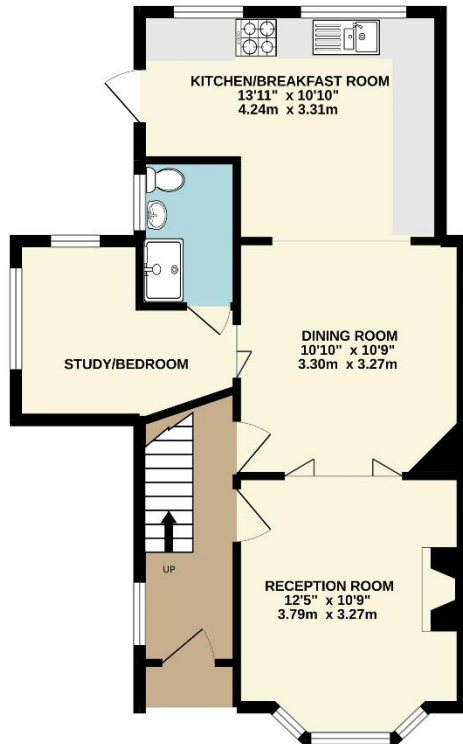


- **Three/Four Bedrooms**
- **Two Reception Rooms**
- **Semi-Detached with Side Access**
- **Close to Train Stations**
- **Excellent Local Schools**

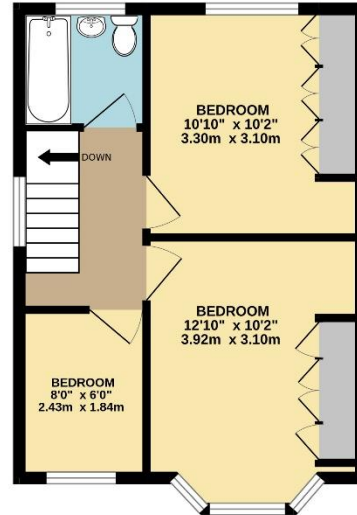
Price £2,600 pcm

A good size three/four bedroom family home with off street parking, comprising two spacious double bedrooms, a single bedroom and an additional bedroom/study. There are also two bathrooms, two reception rooms and a large open plan kitchen overlooking an exceptional garden which backs onto a private field. Ancaster Crescent is a perfect location for families, with it's close proximity to Motspur Park station and several excellent schools. The property is unfurnished and available mid April. EPC rating E. Council tax band E. Security deposit £3000.

GROUND FLOOR



1ST FLOOR



TOTAL FLOOR AREA : 911 sq ft (84.6 sq.m.) approx.

Whilst every attempt has been made to ensure the accuracy of the floorplan contained here, measurements of doors, windows, rooms and any other items are approximate and no responsibility is taken for any error, omission or mis-statement. This plan is for illustrative purposes only and should be used as such by any prospective purchaser. The services, systems and appliances shown have not been tested and no guarantee as to their operability or efficiency can be given.

Made with Metropix ©2022





