

## Homersham Road Kingston Upon Thames

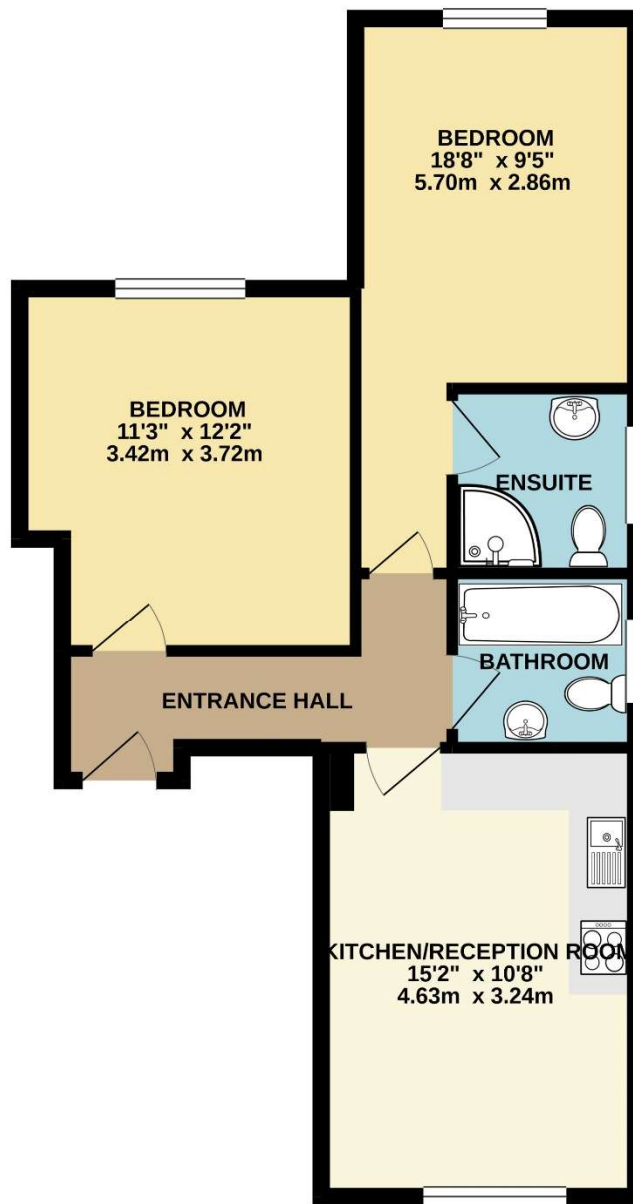


- **Two Double Bedrooms**
- **Two Bathrooms**
- **Private Garden**
- **Close To Station**
- **Good Condition**

**Price £1,895 pcm**

An immaculate first floor conversion flat with a bright kitchen/dining/living room, a master bedroom with en suite shower room, a further double bedroom and a good size bathroom. The flat also benefits from a large, private rear garden and shed with electricity. In addition, the property is within easy walking distance of Norbiton Station, Kingston Town Centre and Richmond Park. The property is available in May and unfurnished. EPC rating C. Council tax band C. Security deposit £2,186 (based on the asking price).

GROUND FLOOR  
564 sq.ft. (52.4 sq.m.) approx.



TOTAL FLOOR AREA : 564 sq.ft. (52.4 sq.m.) approx.

Whilst every attempt has been made to ensure the accuracy of the floorplan contained here, measurements of doors, windows, rooms and any other items are approximate and no responsibility is taken for any error, omission or mis-statement. This plan is for illustrative purposes only and should be used as such by any prospective purchaser. The services, systems and appliances shown have not been tested and no guarantee as to their operability or efficiency can be given.  
Made with Metropix ©2020





