



College Gardens New Malden KT3



- **Three Bedroom House**
- **Off Street Parking for Two Cars**
- **West Facing Garden**
- **Flexible Accomodation**

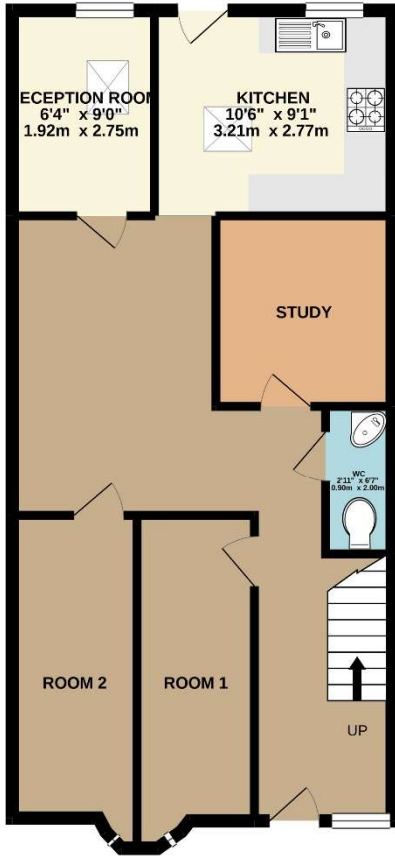
Price £560,000

A three bedroom mid terrace house located within the catchment for good schools and close to excellent transport links. The property comprises of a front reception room (presently split to make two bedrooms), two further reception rooms, a study and a fitted kitchen. with a door onto the west facing garden. On the first floor there are two double bedrooms and a single together with a family bathroom. The property could benefit from some refurbishment to make a good family home. EPC rating C.

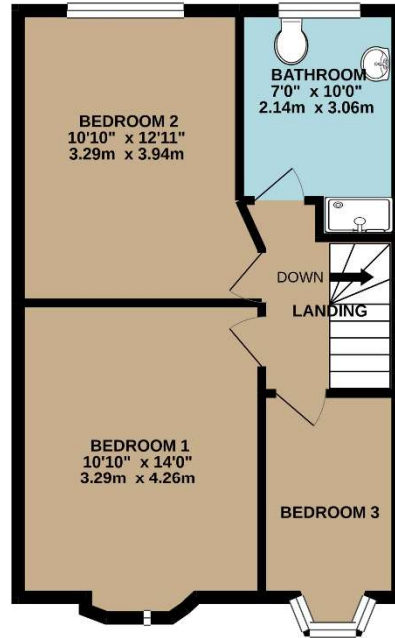




GROUND FLOOR
607 sq.ft. (56.4 sq.m.) approx.



1ST FLOOR
445 sq.ft. (41.3 sq.m.) approx.



TOTAL FLOOR AREA: 1052 sq.ft. (97.8 sq.m.) approx.

Whilst every attempt has been made to ensure the accuracy of the floorplan contained here, measurements of doors, windows, rooms and any other items are approximate and no responsibility is taken for any error, omission or mis-statement. This plan is for illustrative purposes only and should be used as such by any prospective purchaser. The services, systems and appliances shown have not been tested and no guarantee as to their operability or efficiency can be given.
Made with Metrepx ©2021