



Cambridge Road New Malden KT3



- **Modern Ground Floor Flat**
- **Two Double Bedrooms**
- **South Facing Garden**
- **Close to the High Street and Station**

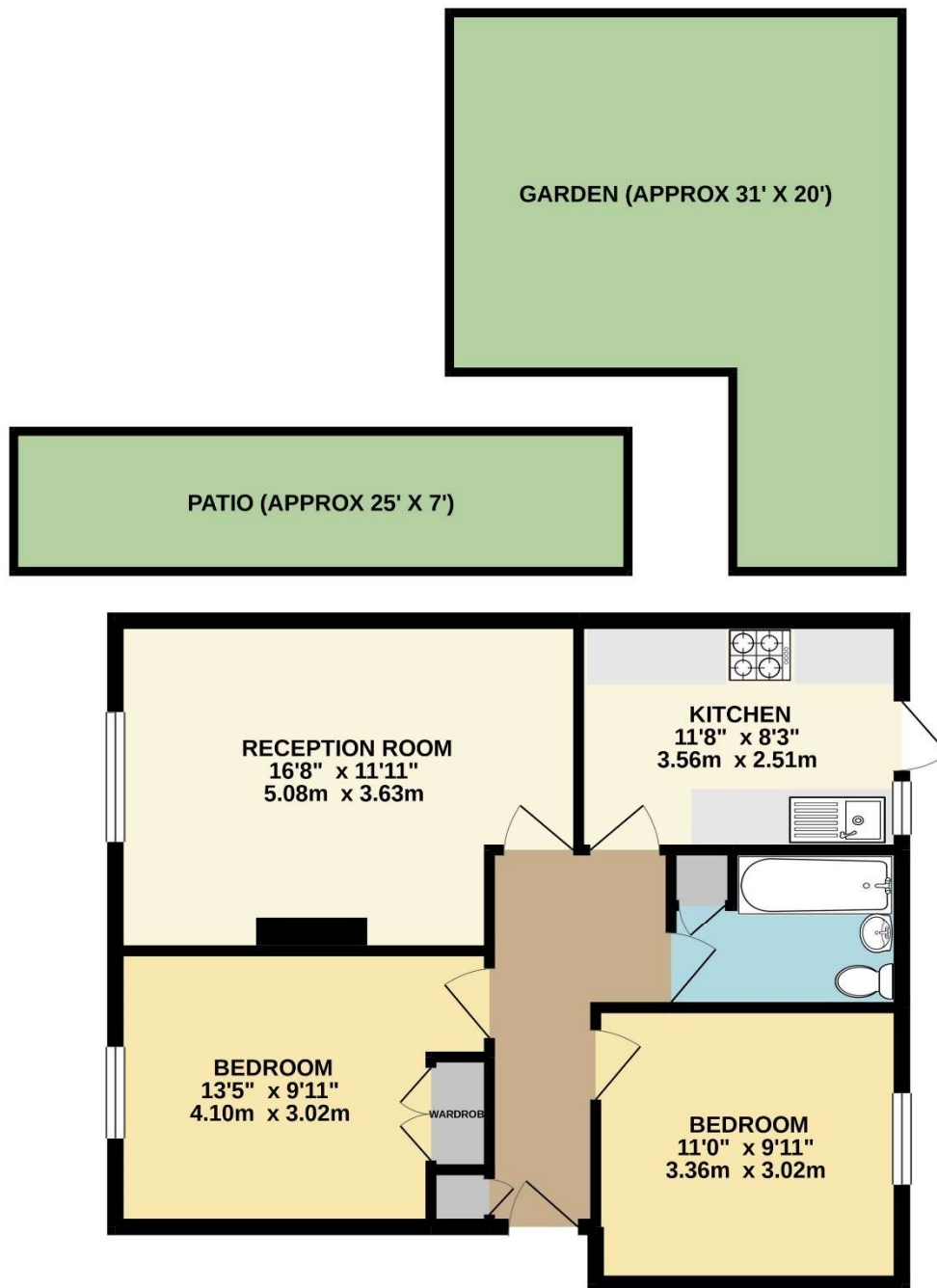
Price £385,000

A spacious modern ground floor flat with large living/dining room, modern fitted kitchen, master bedroom with built in wardrobes, a second good sized double bedroom and family bathroom. In addition, the property has a south facing garden which is laid to lawn and patio. There are also two storage sheds. The property is located within easy walking distance of New Malden High Street and Station and is also in the catchment for excellent schools. EPC rating C.





GROUND FLOOR
681 sq.ft. (63.3 sq.m.) approx.



TOTAL FLOOR AREA : 681sq.ft. (63.3 sq.m.) approx.

Whilst every attempt has been made to ensure the accuracy of the floorplan contained here, measurements of doors, windows, rooms and any other items are approximate and no responsibility is taken for any error, omission or mis-statement. This plan is for illustrative purposes only and should be used as such by any prospective purchaser. The services, systems and appliances shown have not been tested and no guarantee as to their operability or efficiency can be given.
Made with Metropix ©2021