

## Warwick Road New Malden KT3

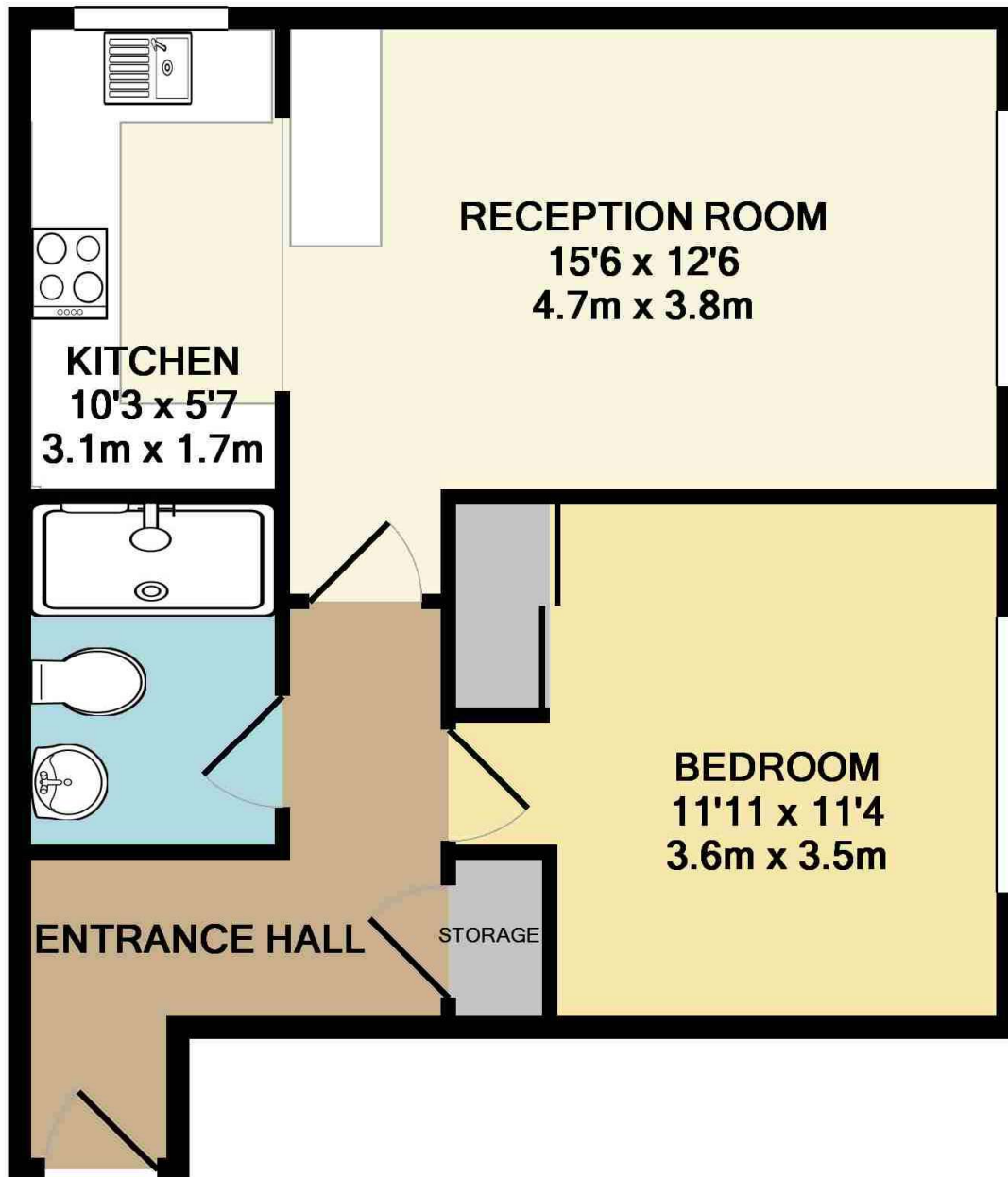


- **One Bedroom Apartment**
- **Large Reception Room**
- **Open-Plan Modern Kitchen**
- **Residents Off-Street Parking**
- **NO ONWARD CHAIN**

**Price £275,000**

A modern and spacious, one bedroom, ground floor, apartment. The property is located in a private development with communal gardens and off street parking. The accommodation comprises a good size, open plan reception room and fitted kitchen, a double bedroom with a built in wardrobe and a separate shower room. There are several local shops nearby at The Triangle, as well as being within easy access to New Malden High Street and station, Kingston and the A3. This would make a great first home or would work well as a rental investment. EPC rating D. Council Tax Band C. NO ONWARD CHAIN





TOTAL APPROX. FLOOR AREA 466 SQ.FT. (43.3 SQ.M.)

Whilst every attempt has been made to ensure the accuracy of the floor plan contained here, measurements of doors, windows, rooms and any other items are approximate and no responsibility is taken for any error, omission, or mis-statement. This plan is for illustrative purposes only and should be used as such by any prospective purchaser. The services, systems and appliances shown have not been tested and no guarantee as to their operability or efficiency can be given

Made with Metropix ©2019