

Alexander House Kingston Upon Thames KT2



- One Double Bedroom Apartment
- Large Living Room with Balcony
- Modern Fitted Kitchen
- Good Size Bathroom
- Private Parking. Lift
- Close to Station and River

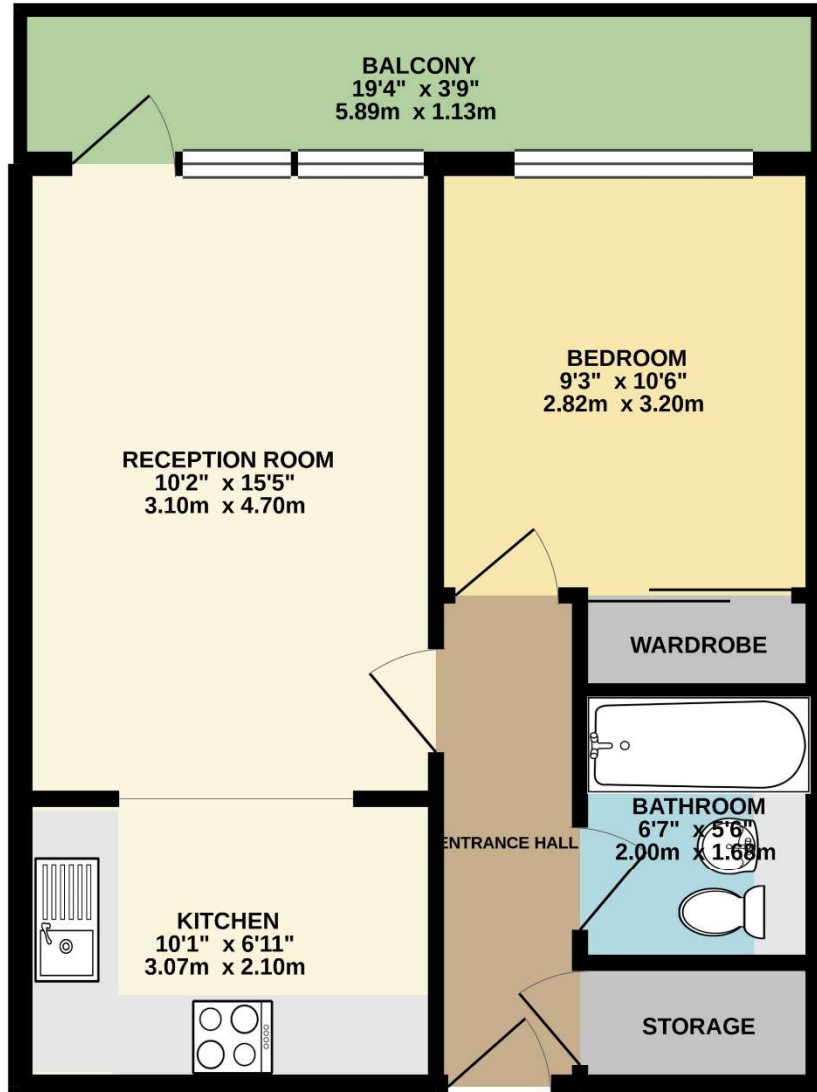
Price £1,600 pcm

Set on the sixth floor (with a lift) of this very popular modern development, a smartly presented apartment with the benefit of secured parking. The accommodation comprises an open plan kitchen/ living/ dining room which opens out to a large balcony, a double bedroom with built-in wardrobe and a good size bathroom. The development is situated within minutes of Kingston town centre and station as well as the river and is also within walking distance of Richmond Park. The property is unfurnished and is available in October. Security deposit £1,788 (based on the asking price. EPC rating C. Council tax band D.





SIXTH FLOOR
432 sq.ft. (40.1 sq.m.) approx.



TOTAL FLOOR AREA : 432 sq.ft. (40.1 sq.m.) approx.

Whilst every attempt has been made to ensure the accuracy of the floorplan contained here, measurements of doors, windows, rooms and any other items are approximate and no responsibility is taken for any error, omission or mis-statement. This plan is for illustrative purposes only and should be used as such by any prospective purchaser. The services, systems and appliances shown have not been tested and no guarantee as to their operability or efficiency can be given.
Made with Metropix ©2021