



Kingston Road New Malden KT3



- Retirement Flat
- Large Living Room
- Communal Gardens
- Residents Parking
- Over 60's Only

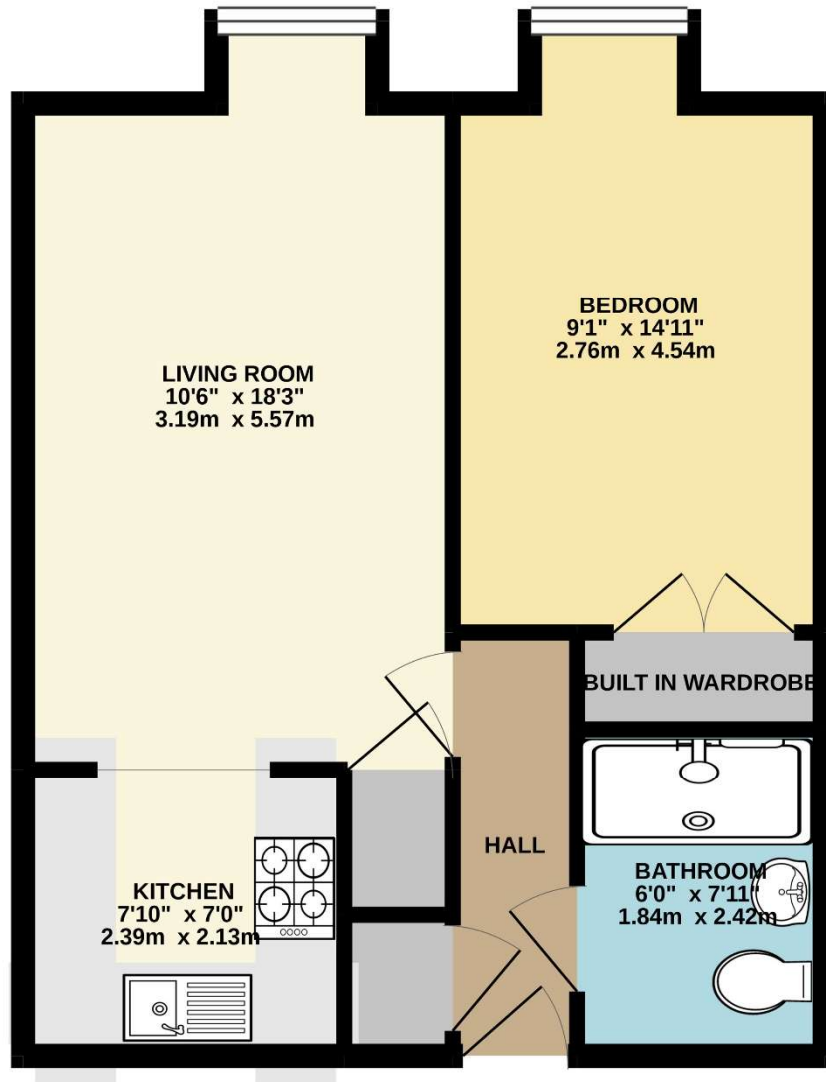
Price £142,000

OVER 60S ONLY - A bright one bedroom top floor flat (with lift) with parking. This flat is located at the rear of the property with views over the south facing communal gardens and it offers a large living room, a modern kitchen, a double bedroom with built in wardrobes and shower room. There is also a communal reception room as well as gardens to the rear. In addition the property is within easy reach of New Malden High Street and Station with excellent transport links. The property is available with no onward chain. EPC rating C.





TOP FLOOR



TOTAL FLOOR AREA : 469 sq.ft. (43.6 sq.m.) approx.

Whilst every attempt has been made to ensure the accuracy of the floorplan contained here, measurements of doors, windows, rooms and any other items are approximate and no responsibility is taken for any error, omission or mis-statement. This plan is for illustrative purposes only and should be used as such by any prospective purchaser. The services, systems and appliances shown have not been tested and no guarantee as to their operability or efficiency can be given.

Made with Metropix ©2021