

Spinney Close New Malden KT3

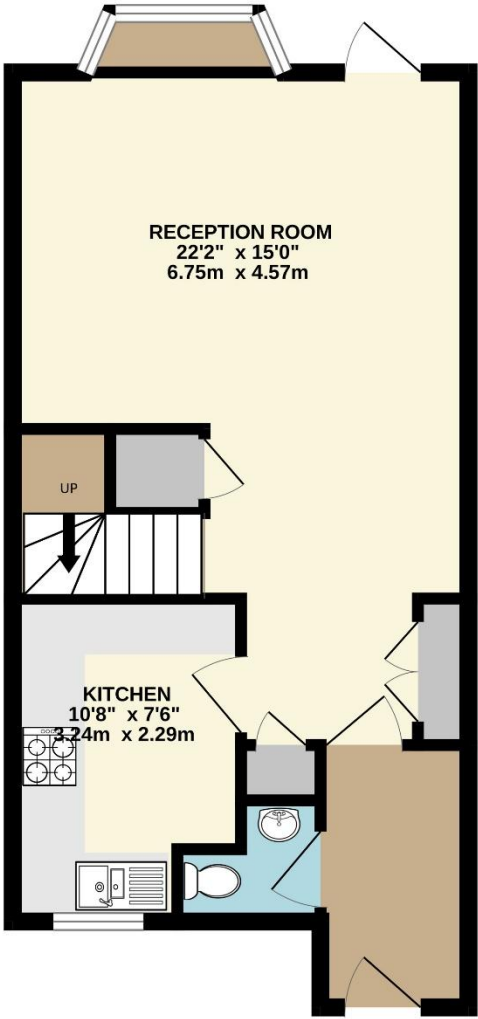


- **Three Bedrooms**
- **Great Location**
- **Walking Distance to the High Street**
- **Available Now**

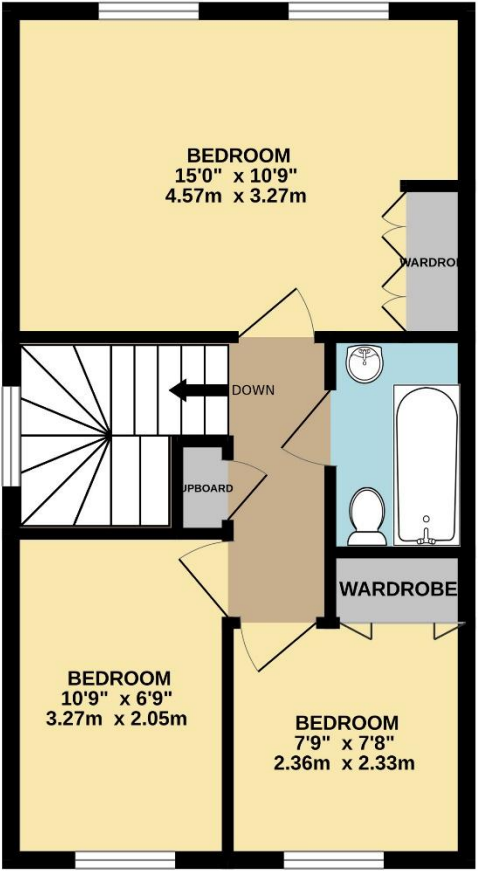
Price £2,200 pcm

A well presented three bedroom family home located in a close within walking distance to New Malden High Street, Holy Cross Secondary school and Westbury House Prep. The ground floor of the property had a modern fitted kitchen, large living room with storage leading onto the garden and a downstairs WC. The first floor of the property has three bedrooms, two with fitted wardrobes, a family bathroom and hallway storage. The property can be part furnished or unfurnished and available now. EPC Rating D. Council Tax Band E. Security Deposit based upon an asking price offer £2,538.00.

GROUND FLOOR



1ST FLOOR



TOTAL FLOOR AREA : 842sq.ft. (78.2 sq.m.) approx.

Whilst every attempt has been made to ensure the accuracy of the floorplan contained here, measurements of doors, windows, rooms and any other items are approximate and no responsibility is taken for any error, omission or mis-statement. This plan is for illustrative purposes only and should be used as such by any prospective purchaser. The services, systems and appliances shown have not been tested and no guarantee as to their operability or efficiency can be given.
Made with Metropix ©2025