

South Lane West New Malden KT3



- **Three Bedroom House**
- **Open Plan Double Reception**
- **Good Sized Garden**
- **Off Street Parking**

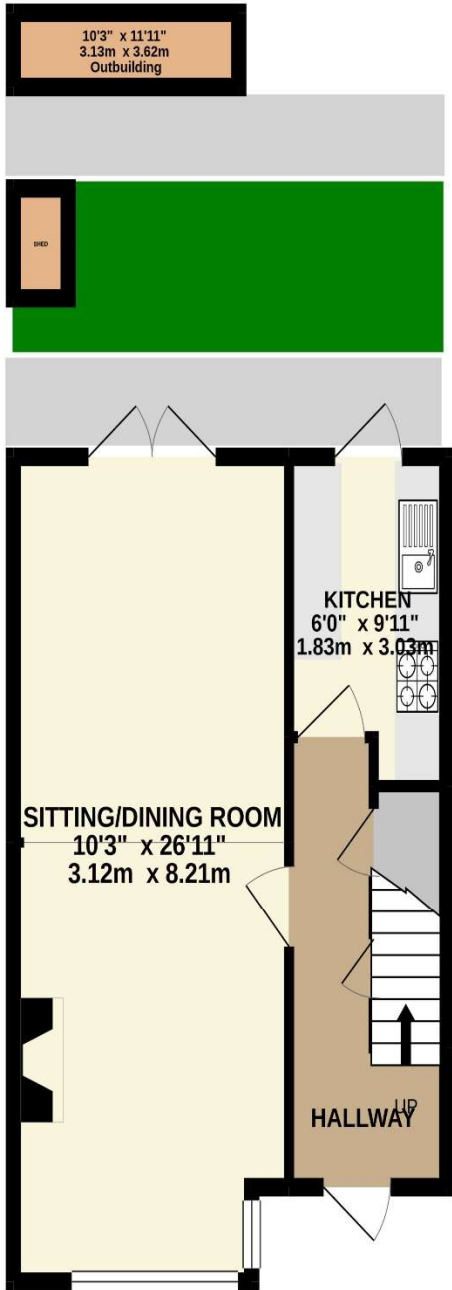
Price £575,000

A well presented family home with an open living and dining room, double doors opening out to a covered patio area with further West Facing lawn; there's an additional paved area for outside furniture, an out-building with electricity, plus a shed for extra storage; a separate kitchen also leading out to the patio area; under stair storage; two double bedrooms, one with full length built in wardrobes and a further third single bedroom/study; family bathroom with separate bath and shower; off street parking; great location. There is also scope to extend into the loft and out at the rear (STPP). EPC rating D. Council Tax Band D.

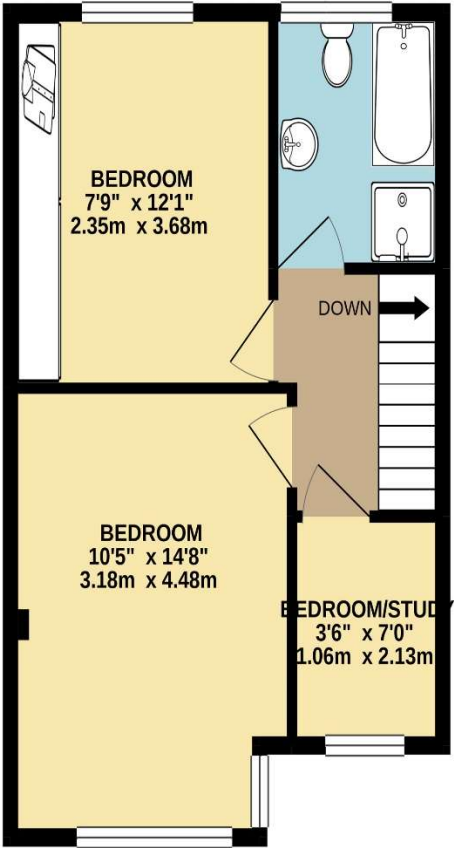




GROUND FLOOR



1ST FLOOR



TOTAL FLOOR AREA: 781 sq.ft. (72.6 sq.m.) approx.

Whilst every attempt has been made to ensure the accuracy of the floorplan contained here, measurements of doors, windows, rooms and any other items are approximate and no responsibility is taken for any error, omission or mis-statement. This plan is for illustrative purposes only and should be used as such by any prospective purchaser. The services, systems and appliances shown have not been tested and no guarantee as to their operability or efficiency can be given.
Made with Metropix ©2021