



## Crown Road New Malden KT3



- **Two Double Bedroom Two Bathroom Apartment**
- **Balconies off the Living Room and Bedroom**
- **Allocated Parking Space**
- **Air Conditioning and Underfloor Heating to the Bathrooms**
- **Access to Excellent Transport Links**
- **Share of Freehold**

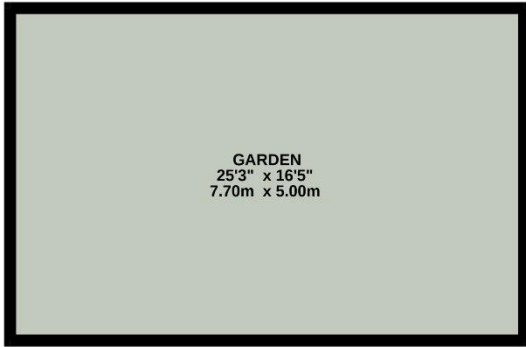
**Price £525,000**

A newly refurbished first floor two-bedroom apartment finished to the highest specification including air conditioning and under-floor heating in the bathrooms. The property is located in the hugely popular Coombeside area within easy access of Kingston Upon Thames, Richmond Park and Wimbledon. The open plan kitchen/dining/living benefits from plenty of natural light. There is direct access to a private balcony from here, The master bedroom has built in wardrobes and a balcony with views of the surrounding area, there is also an en suite shower room. There is a second double bedroom and bathroom. In addition, there is an allocated parking space and share of a private garden (approx. 7.7 x 5m).  
SHARE OF FREEHOLD. EPC rating C.

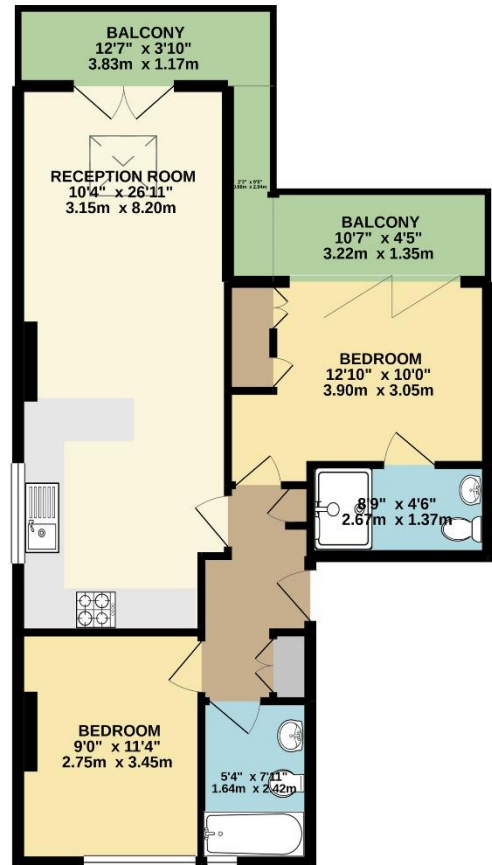




GROUND FLOOR  
414 sq.ft. (38.5 sq.m.) approx.



FIRST FLOOR  
677 sq.ft. (62.9 sq.m.) approx.



TOTAL FLOOR AREA: 677sq.ft. (62.9 sq.m.) approx.

Whilst every attempt has been made to ensure the accuracy of the floorplan contained here, measurements of doors, windows, rooms and any other items are approximate and no responsibility is taken for any error, omission or mis-statement. This plan is for illustrative purposes only and should be used as such by any prospective purchaser. The services, systems and appliances shown have not been tested and no guarantee as to their operability or efficiency can be given.  
Made with Metropix ©2021