

Presburg Road New Malden KT3



- **Detached House**
- **Six Bedrooms**
- **Grand Reception Hall**
- **Large Garden**
- **Off Street Parking**
- **Close to schools, local amenities and local transport**

Price £1,225,000

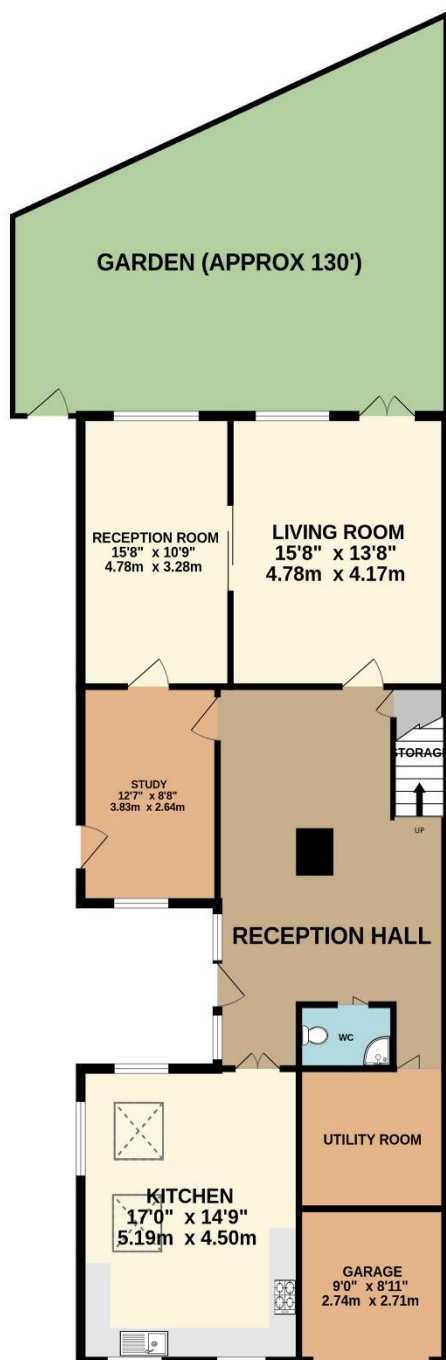
A spacious, detached, six bedroom family home located in a desirable part of New Malden. The ground floor comprises a large central reception hall leading to two reception rooms, one with a log burner, plus a study, utility, W.C., large kitchen and a garage. On the first floor there is a large landing with three bedrooms and a family bathroom and on the second floor there are a further three bedrooms, one with an en-suite shower room, plus a separate additional shower room. The large, rear garden has ample space to extend further (STPP), and there is a good sized private driveway to the front for multiple cars. Presburg Road is ideally located for excellent schools and both the High Street and station are close by; this property is a must see. Council Tax Band G. EPC Rating C.



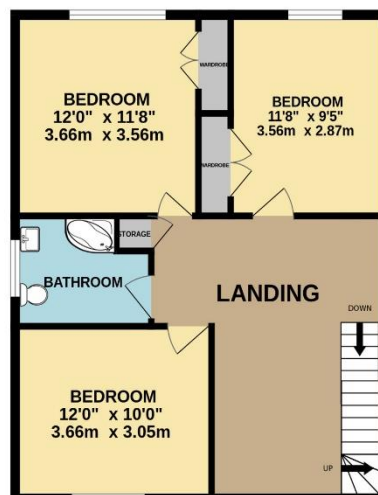




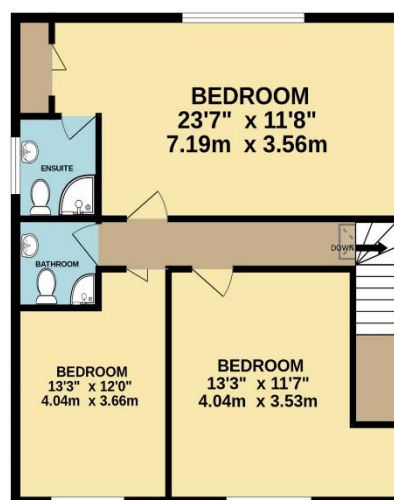
GROUND FLOOR



1ST FLOOR



2ND FLOOR



TOTAL FLOOR AREA : 2733sq.ft. (253.9 sq.m.) approx.

Whilst every attempt has been made to ensure the accuracy of the floorplan contained here, measurements of doors, windows, rooms and any other items are approximate and no responsibility is taken for any error, omission or mis-statement. This plan is for illustrative purposes only and should be used as such by any prospective purchaser. The services, systems and appliances shown have not been tested and no guarantee as to their operability or efficiency can be given.

Made with Metropix ©2023