

Kingston Road New Malden KT3



- **Generously Proportioned Ground Floor Flat**
- **Spacious Living/Dining Room**
- **Two Double Bedrooms**
- **Garage**
- **Close to Excellent Transport Links**
- **Easy Walking Distance of New Malden High Street**

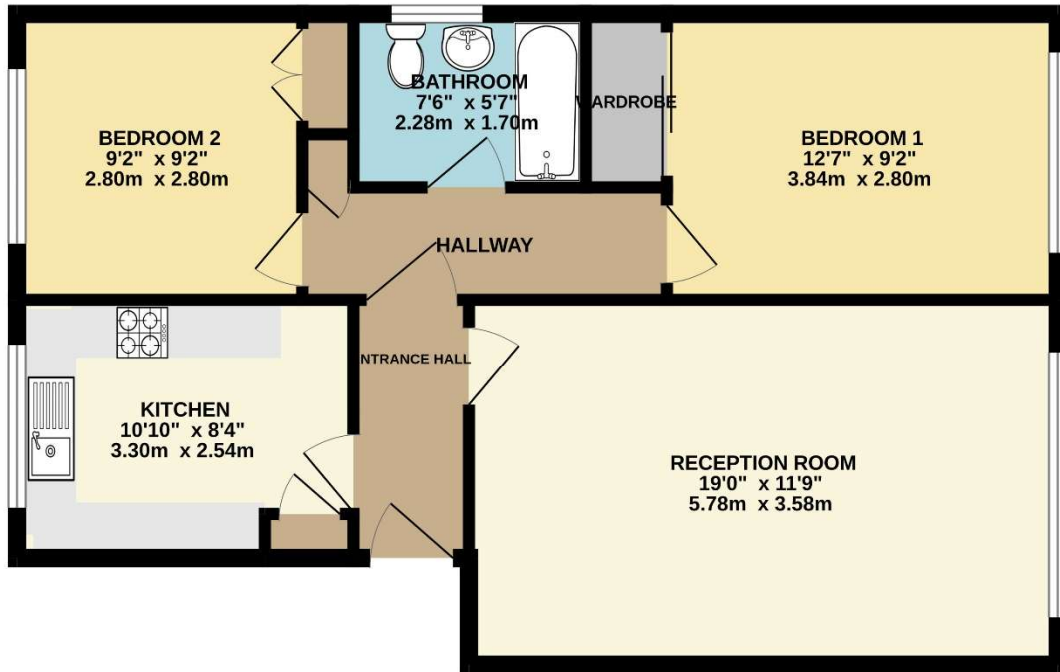
Price £350,000

A large ground floor flat with a spacious living/dining room, fitted kitchen, two generous double bedrooms, bathroom and garage. The property is located with easy access to New Malden High Street and Station and close to excellent transport links both to Wimbledon and Kingston. New Malden High Street has a buzzy atmosphere with a wealth of restaurants and cafes together with many brand supermarkets from different countries. Ideal for an Investor or First Time Buyer. EPC Rating C. Council Tax Band D. NO ONWARD CHAIN





GROUND FLOOR
652 sq.ft. (60.6 sq.m.) approx.



TOTAL FLOOR AREA : 652 sq.ft. (60.6 sq.m.) approx.
Whilst every attempt has been made to ensure the accuracy of the floorplan contained here, measurements of doors, windows, rooms and any other items are approximate and no responsibility is taken for any error, omission or mis-statement. This plan is for illustrative purposes only and should be used as such by any prospective purchaser. The services, systems and appliances shown have not been tested and no guarantee is given as to their operability or efficiency can be given.
Made with Metropix ©2025