

Elm Road New Malden KT3



- **Large One Bedroom, First Floor Flat**
- **Modern throughout**
- **Communal garden**
- **Allocated Parking**
- **Share of Freehold**

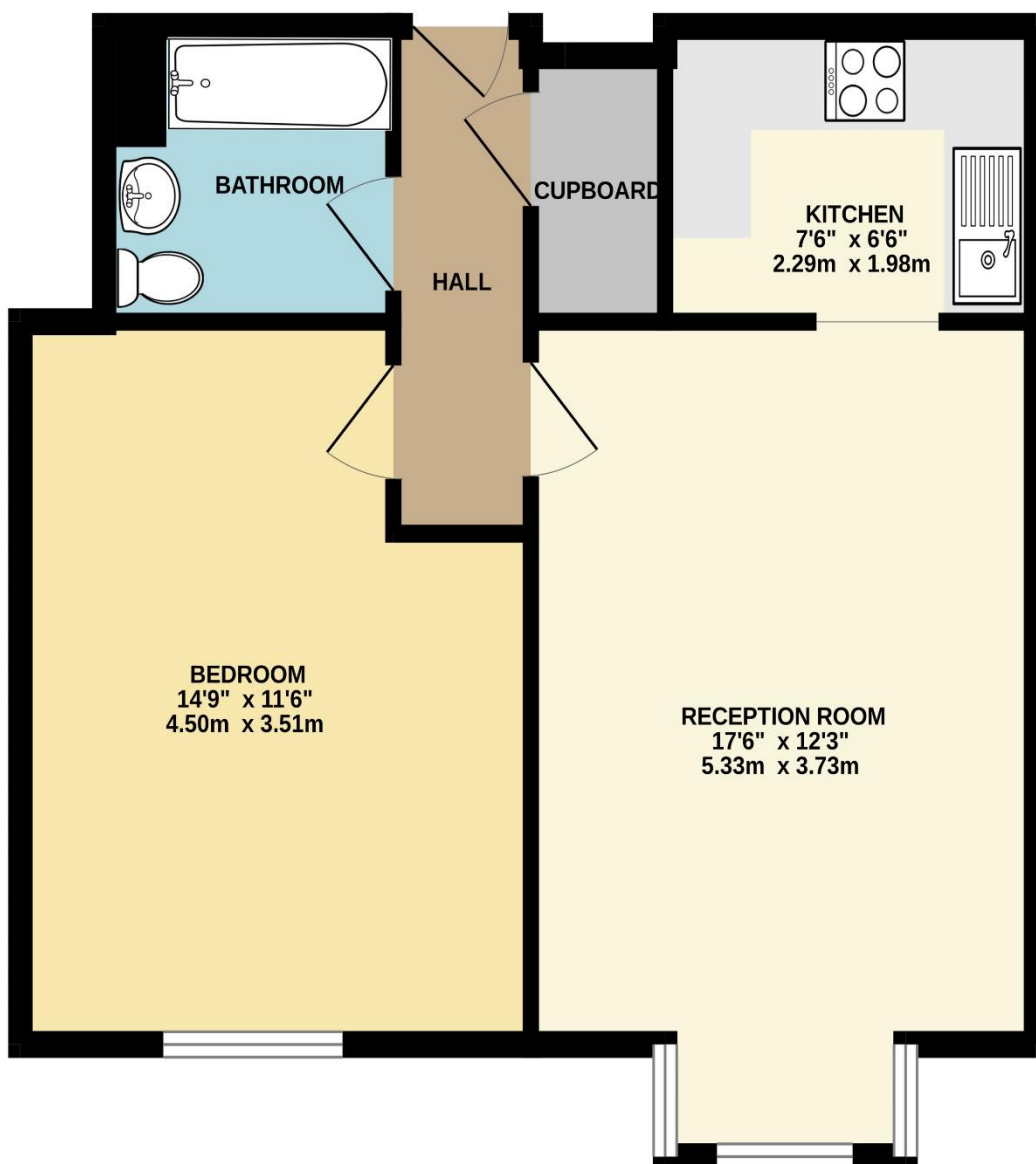
Price £305,000

Spacious, bright, first floor, large one bedroom flat, modern throughout, including the communal areas. The property benefits from allocated parking and access to a well maintained communal garden and within walking distance to 'The Cut' which leads to New Malden Station and the High Street, (approx. 5 mins walk). Situated off Elm Road, which has access to Kingston Road bus routes and various local amenities. Council tax Band C. EPC Rating C.





FIRST FLOOR
513 sq.ft. (47.7 sq.m.) approx.



TOTAL FLOOR AREA : 513 sq.ft. (47.7 sq.m.) approx.

Whilst every attempt has been made to ensure the accuracy of the floorplan contained here, measurements of doors, windows, rooms and any other items are approximate and no responsibility is taken for any error, omission or mis-statement. This plan is for illustrative purposes only and should be used as such by any prospective purchaser. The services, systems and appliances shown have not been tested and no guarantee as to their operability or efficiency can be given.
Made with Metropix ©2023