

Coombe Road New Malden KT3



- **Spacious Studio Room**
- **Laid out in Zoned Areas**
- **Separate Kitchen**
- **Lift**
- **Residents Parking**
- **Moments From New Malden Station**

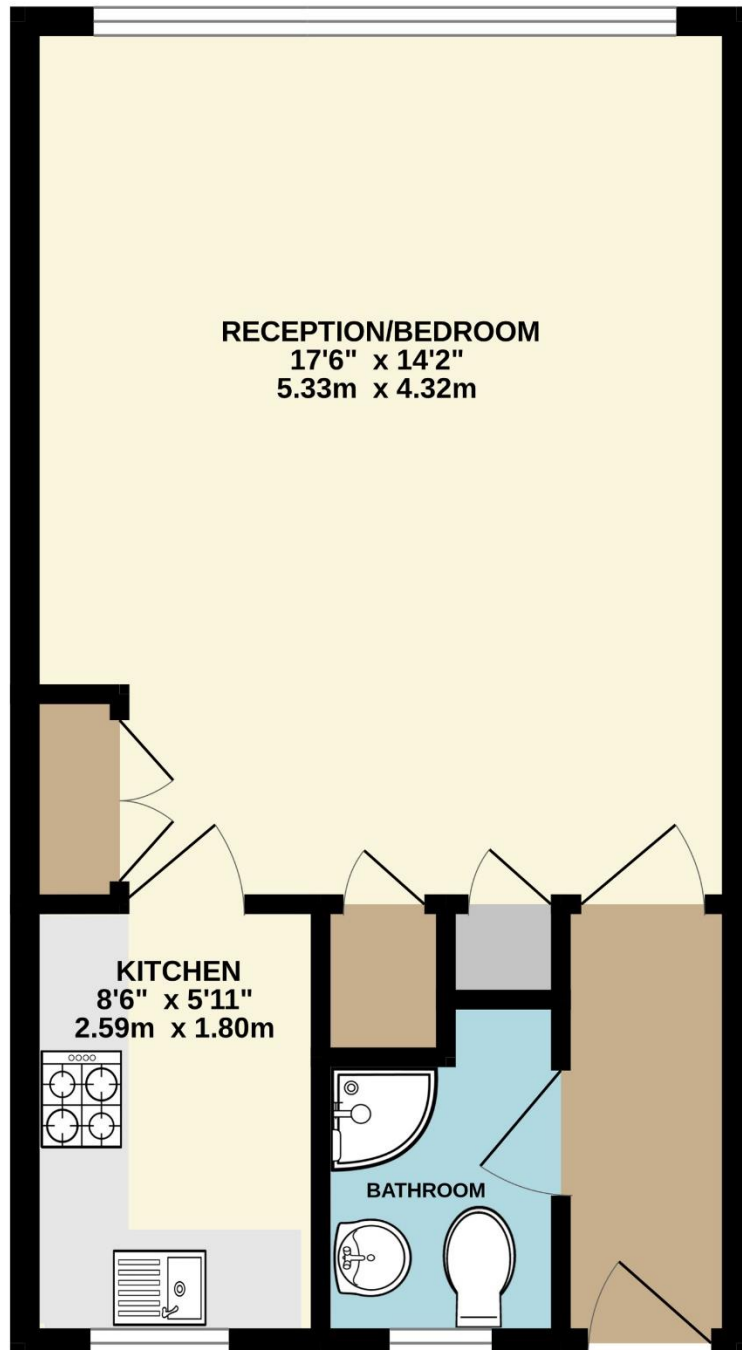
OIEO £230,000

A spacious top floor studio flat located in a central New Malden location within a couple of minute's walk of the Station and High Street with a communal lift and residents parking. The property has been laid out in zones in order to optimise the space, including a living/dining/study and sleeping area. In addition, the property has a separate kitchen and shower room. The property further benefits from having a long lease Viewing highly recommended. EPC F.





THIRD FLOOR
372 sq.ft. (34.6 sq.m.) approx.



TOTAL FLOOR AREA : 372 sq.ft. (34.6 sq.m.) approx.

Whilst every attempt has been made to ensure the accuracy of the floorplan contained here, measurements of doors, windows, rooms and any other items are approximate and no responsibility is taken for any error, omission or mis-statement. This plan is for illustrative purposes only and should be used as such by any prospective purchaser. The services, systems and appliances shown have not been tested and no guarantee as to their operability or efficiency can be given.
Made with Metropix ©2024