

Coombe Road New Malden KT3



- **Modern Complex with Lift**
- **Underfloor Heating**
- **Secure Phone Entry System**
- **Open Plan Kitchen Living Space**
- **0.2 miles to New Malden Railway Station and High Street**
- **Ample Storage**
- **No Onward Chain**

Price £340,000

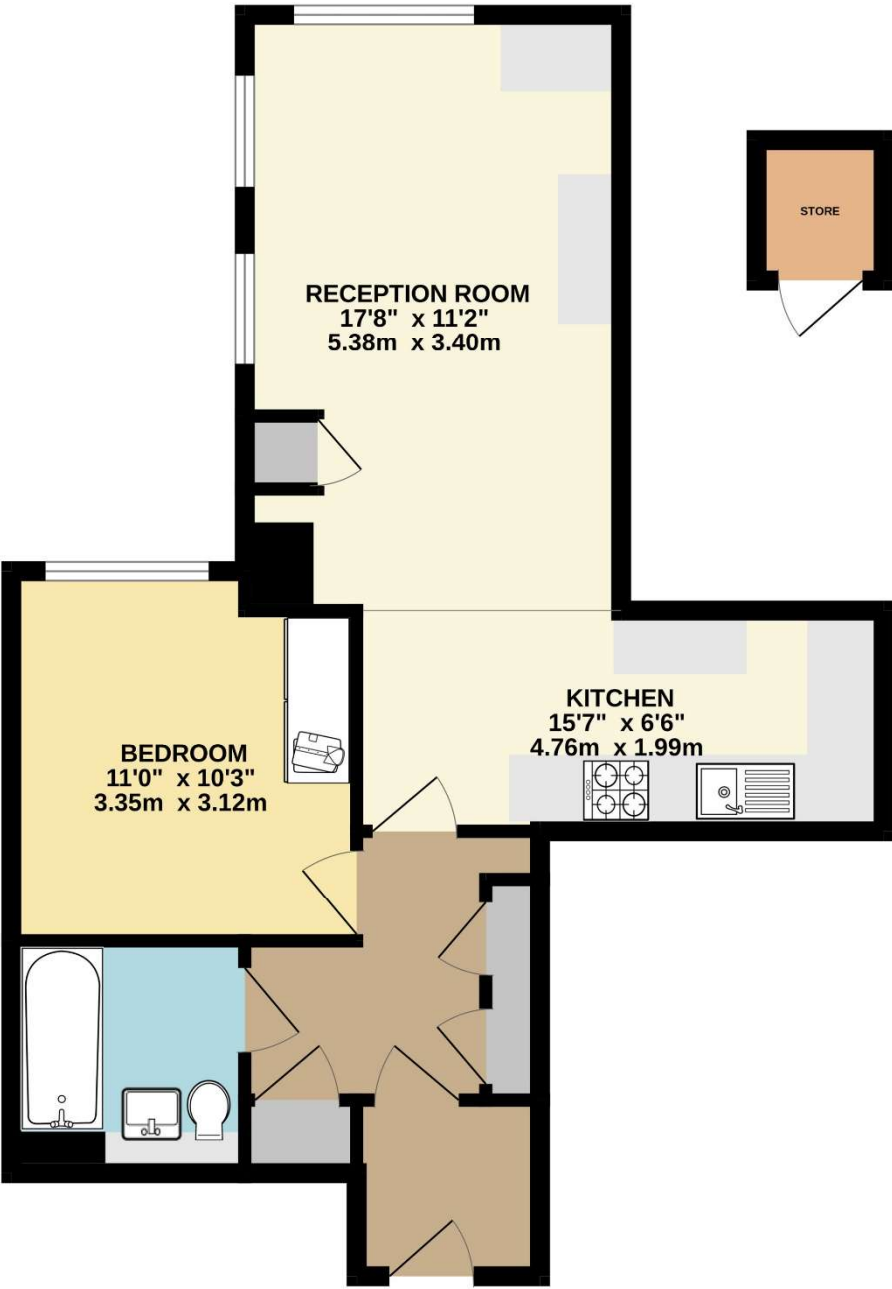
A modern and spacious one bedroom property located within walking distance of New Malden High Street and Station. This larger than average one bedroom flat comprises of a large hallway with organised coat and shoe storage and a separate storage cupboard, a large modern bathroom including a heated towel rail, a good sized doubled bedroom with wardrobes and a large open plan reception room and kitchen. The kitchen consists of integrated appliances, plentiful storage cupboards and work space, with the added benefit of a dishwasher. The property also benefits from under floor heating and a separate storage shed located in the underground basement plus a secure entryphone system for the building. Council Tax Band C. EPC C. No onward chain.







FIRST FLOOR
558 sq.ft. (51.8 sq.m.) approx.



TOTAL FLOOR AREA : 558 sq.ft. (51.8 sq.m.) approx.

Whilst every attempt has been made to ensure the accuracy of the floorplan contained here, measurements of doors, windows, rooms and any other items are approximate and no responsibility is taken for any error, omission or mis-statement. This plan is for illustrative purposes only and should be used as such by any prospective purchaser. The services, systems and appliances shown have not been tested and no guarantee as to their operability or efficiency can be given.

Made with Metropix ©2024