

## Long Walk New Malden KT3



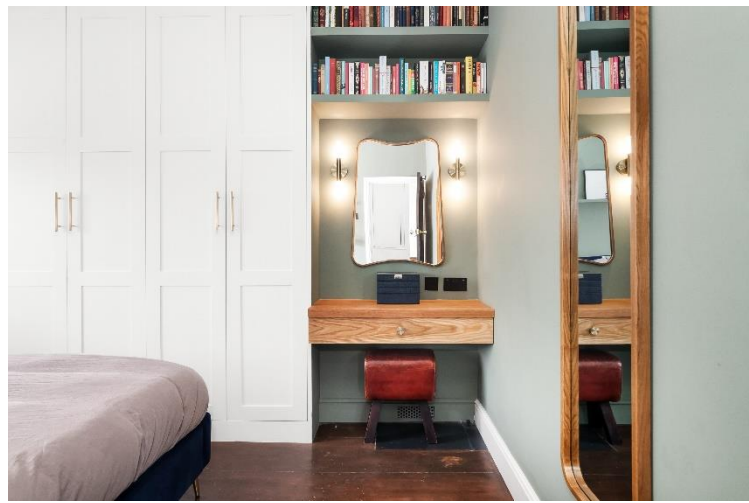
- **Three Bedroom Semi-Detached House**
- **Renovated to a high standard**
- **Impressive, open plan kitchen/living/dining room**
- **Off Street Parking**
- **Garage**
- **Close to schools, local transport and amenities**

**Price £795,000**

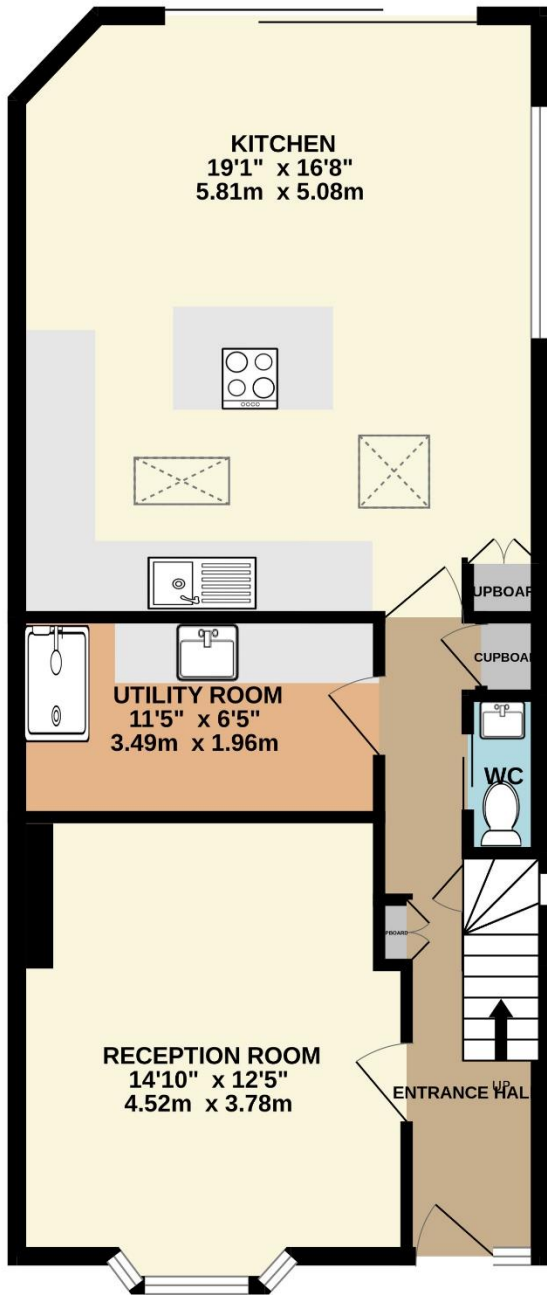
A three bedroom semi detached house laid out over two floors, finished to a high specification throughout. A large hallway leading to a front reception, there is also a separate utility room, W.C. and plenty of storage. The kitchen / dining / living room is very light and well equipped, with a large window to the side, plus a patio door opening out to a decent sized garden with raised planters. There is off street parking and a garage to the side of the property. On the first floor there are two doubles and a single bedroom / study and a family bathroom. With further extension potential (STPP) there is no doubt this property is a must see. Within the catchment for local schools and close to amenities and local transport. EPC Rating D. Council Tax Band D.



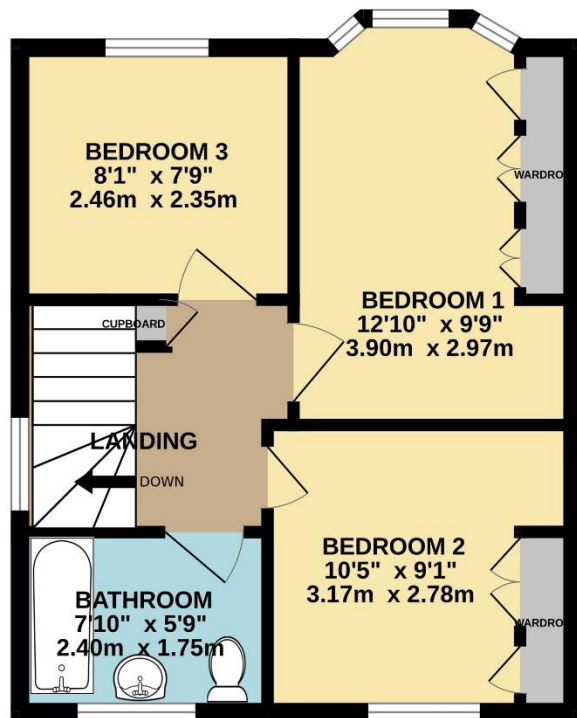




GROUND FLOOR  
654 sq.ft. (60.8 sq.m.) approx.



1ST FLOOR  
376 sq.ft. (35.0 sq.m.) approx.



TOTAL FLOOR AREA : 1031 sq.ft. (95.8 sq.m.) approx.

Whilst every attempt has been made to ensure the accuracy of the floorplan contained here, measurements of doors, windows, rooms and any other items are approximate and no responsibility is taken for any error, omission or mis-statement. This plan is for illustrative purposes only and should be used as such by any prospective purchaser. The services, systems and appliances shown have not been tested and no guarantee as to their operability or efficiency can be given.  
Made with Metropix ©2024