

## Richmond Grove Surbiton KT5

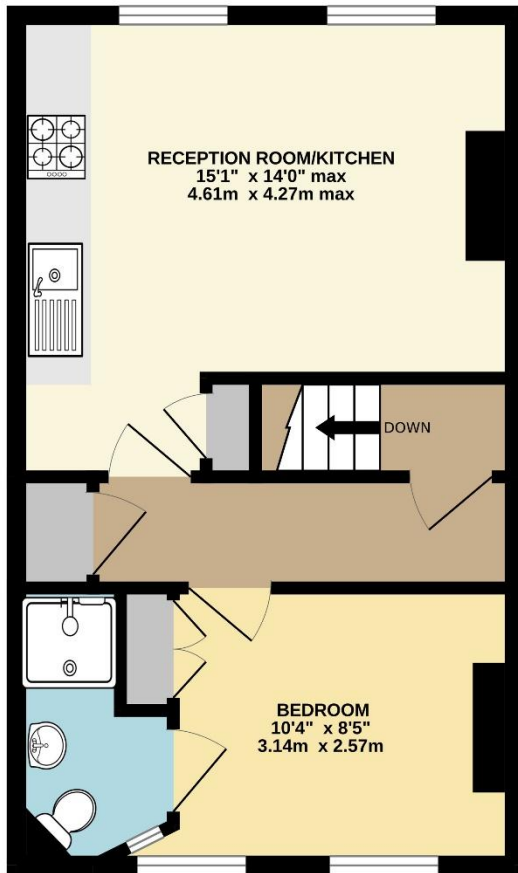


- One Bedroom Flat
- Open Plan Living Room/Kitchen
- Close to Surbiton
- Available Late May

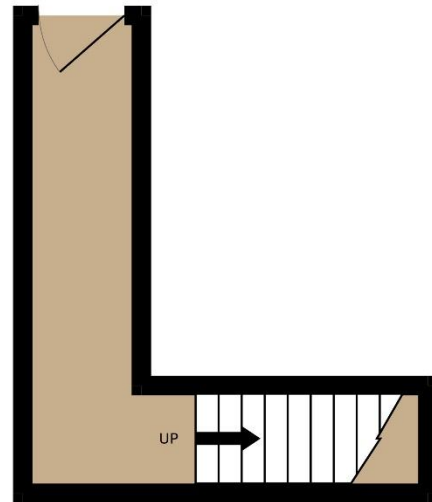
**Price £1,250 pcm**

A first floor conversion flat located in this quiet road within easy reach of Surbiton. The property is really well presented throughout and has a lovely, open-plan reception room and kitchen, a double bedroom, an en suite shower room and there are also a couple of useful storage cupboards. The property is unfurnished and available late May. Security deposit £1,442 (based on the asking price). Council tax band C. EPC rating C.

1ST FLOOR



GROUND FLOOR



TOTAL FLOOR AREA : 461 sq.ft. (42.8 sq.m.) approx.

Whilst every attempt has been made to ensure the accuracy of the floorplan contained here, measurements of doors, windows, rooms and any other items are approximate and no responsibility is taken for any error, omission or mis-statement. This plan is for illustrative purposes only and should be used as such by any prospective purchaser. The services, systems and appliances shown have not been tested and no guarantee as to their operability or efficiency can be given.  
Made with Metropix ©2025





