

Westbury Road New Malden KT3



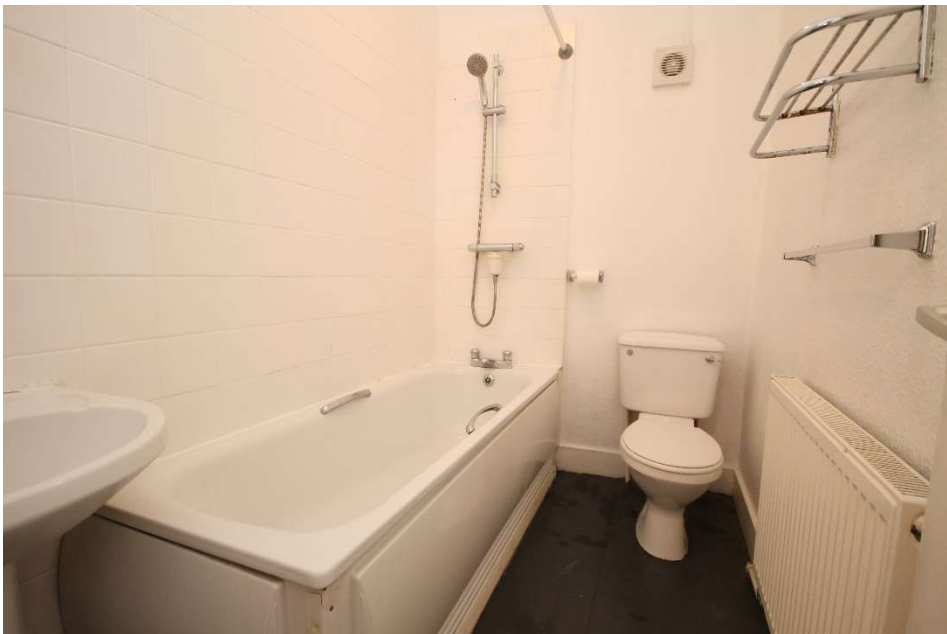
- **Two Double Bedroom Period Maisonette**
- **Bright Reception**
- **Separate Kitchen**
- **Easy Walking Distance of New Malden High Street**
- **Share of Freehold**
- **No Onward Chain**

Price £335,000

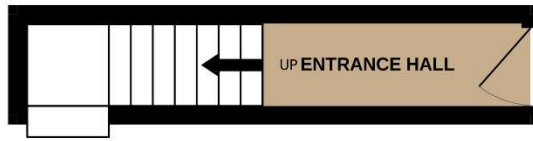
A spacious first floor period maisonette with high ceilings, comprising a bright reception room leading to a separate kitchen with fitted units, a main bedroom with dual aspect windows and original fireplace, a second double bedroom and bathroom. The property is located close to good transport links and within easy walking distance of New Malden High Street. In addition it is situated within the catchment of a number of good schools. No onward chain. Share of Freehold. EPC D.



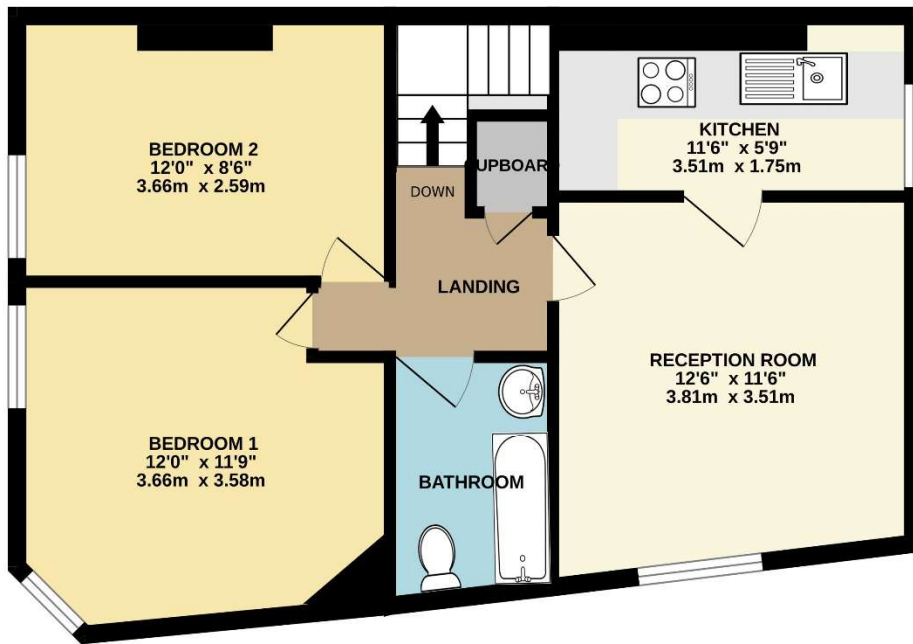




GROUND FLOOR
53 sq.ft. (4.9 sq.m.) approx.



1ST FLOOR
516 sq.ft. (47.9 sq.m.) approx.



TOTAL FLOOR AREA : 569 sq.ft. (52.8 sq.m.) approx.

Whilst every attempt has been made to ensure the accuracy of the floorplan contained here, measurements of doors, windows, rooms and any other items are approximate and no responsibility is taken for any error, omission or mis-statement. This plan is for illustrative purposes only and should be used as such by any prospective purchaser. The services, systems and appliances shown have not been tested and no guarantee as to their operability or efficiency can be given.
Made with Metropix ©2024