

Aldridge Rise New Malden KT3



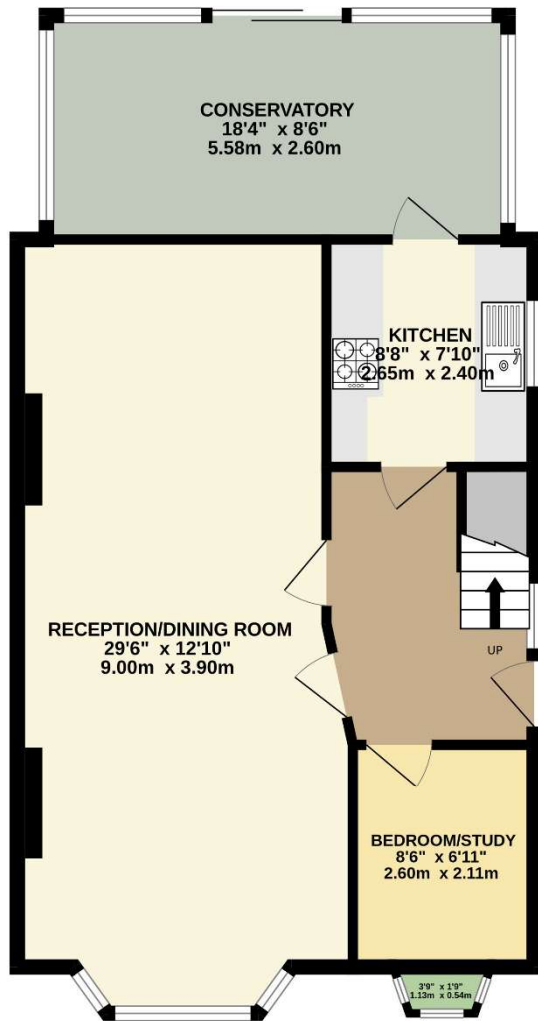
- **Detached Family House**
- **Four Bedrooms. Two Bathrooms**
- **Large Living Space**
- **Parking For 2-3 Cars**
- **Good Size Garden**
- **Available Now**

Price £3,000 pcm

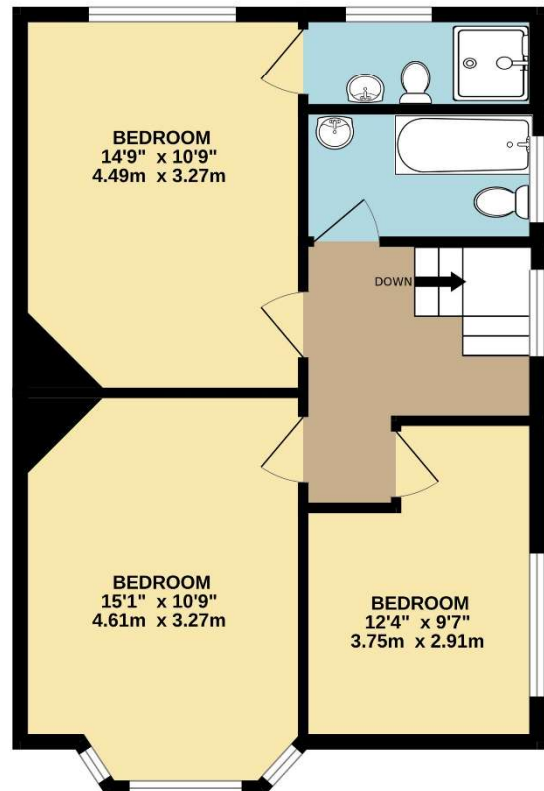
A detached family home which has been recently refurbished and now offers excellently presented accommodation over two floors. The ground floor has a large double reception/dining room, a fitted kitchen, a bedroom/study and a conservatory which leads out to the large rear garden and upstairs there are three double bedrooms, an en suite shower room and a family bathroom; the property also has parking to the front. Aldridge Rise is a popular residential road within close proximity of local schools and transport links. The property is unfurnished and available now. Security deposit £3,461. Council tax band F. EPC rating D.



GROUND FLOOR



1ST FLOOR



TOTAL FLOOR AREA : 1356sq.ft. (126.0 sq.m.) approx.

Whilst every attempt has been made to ensure the accuracy of the floorplan contained here, measurements of doors, windows, rooms and any other items are approximate and no responsibility is taken for any error, omission or mis-statement. This plan is for illustrative purposes only and should be used as such by any prospective purchaser. The services, systems and appliances shown have not been tested and no guarantee as to their operability or efficiency can be given.

Made with Metropix ©2024



