

Westbury Road New Malden KT3



- **A Ground Floor One Bedroom Conversion Flat**
- **Good Sized Living Room**
- **50 Ft Private Garden**
- **Allocated Parking Space**
- **Walking Distance of New Malden High Street**

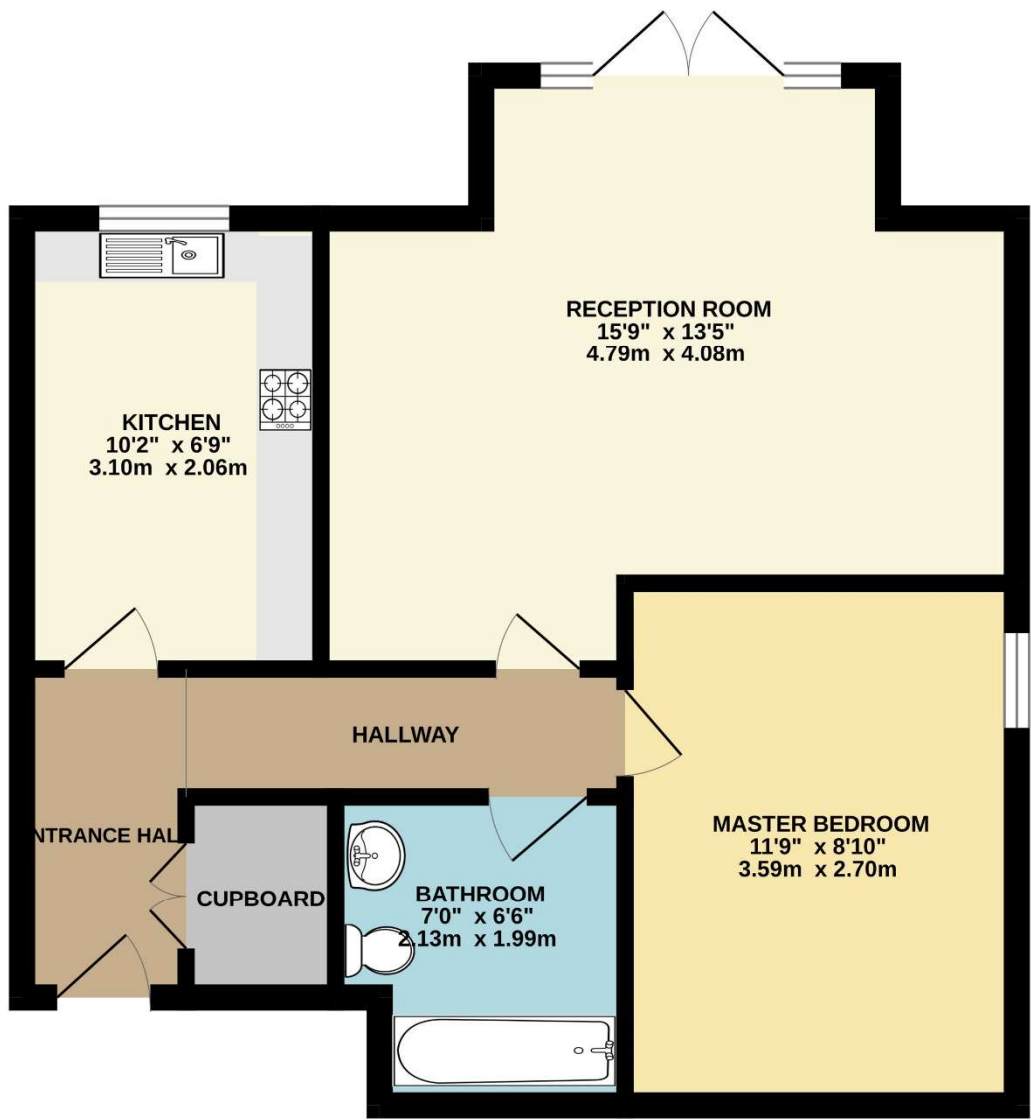
Price £365,000

A light and airy, well presented, ground floor one double bedroom flat in a period conversion. The property comprises an L-shaped hallway with deep storage cupboard, a good sized living room with double doors leading to a large private garden (approx. 50ft), which is rare for a one bedroom flat. There is a separate fitted kitchen, a double bedroom with fitted wardrobes and bathroom. In addition, there is the benefit of an allocated parking space. Located within walking distance of New Malden High Street and Station and with easy access to the A3. EPC C. Council Tax Band C





GROUND FLOOR
460 sq.ft. (42.8 sq.m.) approx.



TOTAL FLOOR AREA : 460 sq.ft. (42.8 sq.m.) approx.

Whilst every attempt has been made to ensure the accuracy of the floorplan contained here, measurements of doors, windows, rooms and any other items are approximate and no responsibility is taken for any error, omission or mis-statement. This plan is for illustrative purposes only and should be used as such by any prospective purchaser. The services, systems and appliances shown have not been tested and no guarantee as to their operability or efficiency can be given.

Made with Metropix ©2025