

Chestnut Grove New Malden KT3



- Hall Adjoining Edwardian House
- Four Excellent Sized Bedrooms
- Two Receptions
- Opportunity to Add Own Stamp
- South Facing Garden
- Off Street Parking

Price £1,100,000

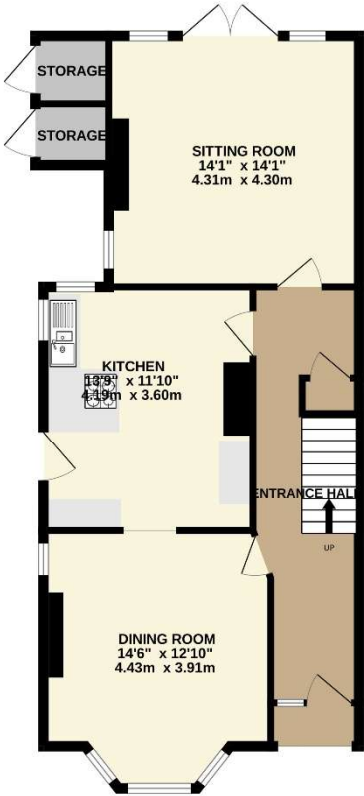
A deceptively spacious, four bedroom, halls adjoining, Edwardian house, in need of modernisation, but still encompassing decorative brick work, to the front, original features including fireplaces and stain glass windows. The property comprises a front reception with large bay window, connecting to the kitchen with side access, a further large reception room with dual aspect and patio doors leading to a south facing garden. On the first floor there is a magnificent master bedroom with original fireplace, bay window and wooden floors, a second large double bedroom with plenty of natural light, a single bedroom with dual aspect and family bathroom. On the second floor there is a further double bedroom with skylight. In addition, there is plenty of storage in the loft area and two outdoor cupboards. Situated in the Heart of the "Groves" with off street parking this truly individual house will make a superb family home, within close walking distance of New Malden Station and High Street with its strong community soul and in the catchment for excellent schools. EPC rating TBC. Council Tax band F



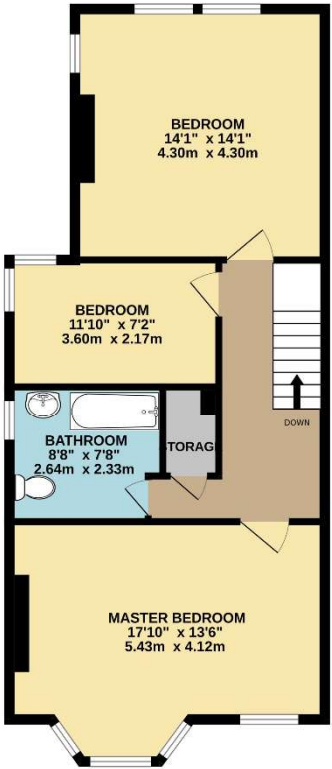




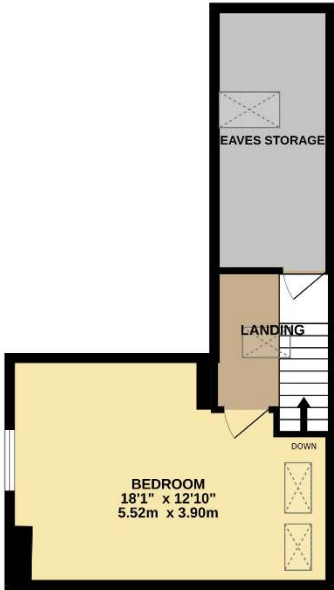
GROUND FLOOR
690 sq.ft. (64.1 sq.m.) approx.



1ST FLOOR
665 sq.ft. (61.7 sq.m.) approx.



2ND FLOOR
355 sq.ft. (33.0 sq.m.) approx.



TOTAL FLOOR AREA : 1710 sq.ft. (158.9 sq.m.) approx.

Whilst every attempt has been made to ensure the accuracy of the floorplan contained here, measurements of doors, windows, rooms and any other items are approximate and no responsibility is taken for any error, omission or mis-statement. This plan is for illustrative purposes only and should be used as such by any prospective purchaser. The services, systems and appliances shown have not been tested and no guarantee as to their operability or efficiency can be given.

Made with Metropix ©2025