

Kingston Road New Malden KT3

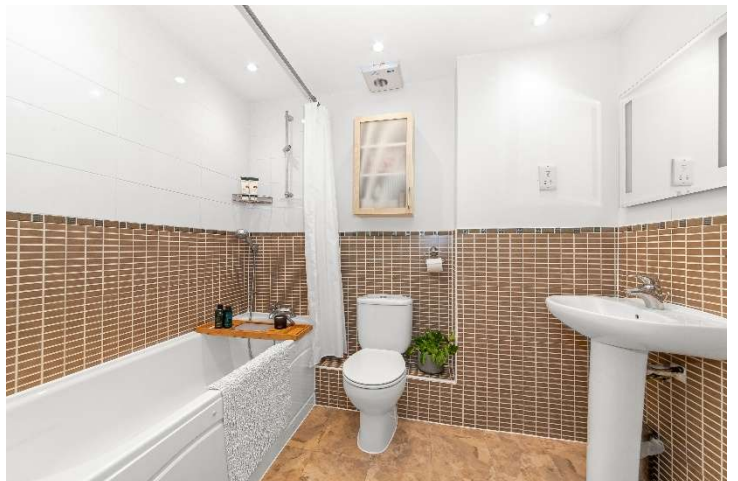


- **Modern Two Double Bedroom Apartment**
- **Superb Bright Open Plan Reception Room**
- **Two Bathrooms**
- **Private Parking Space**
- **Amazing Views Towards Richmond Park**
- **Central Location**

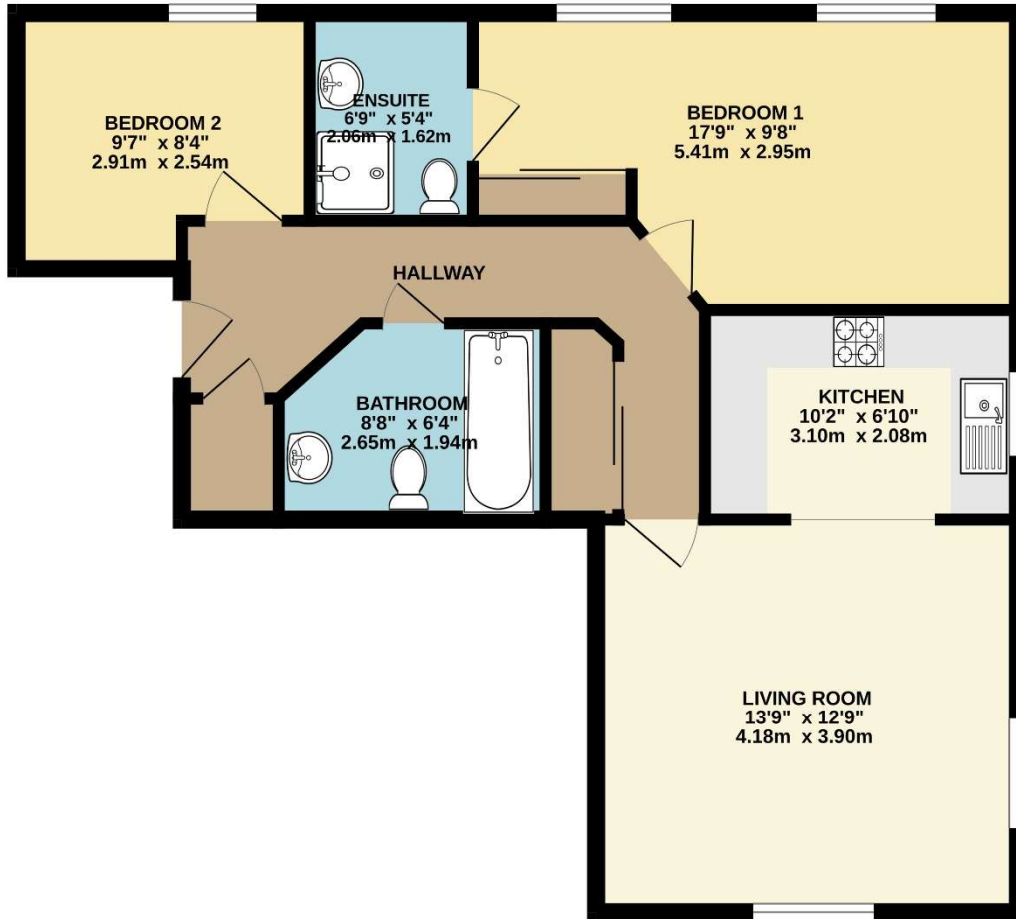
Price £400,000

A welcoming atmosphere awaits and as you step inside the bright hallway you get the first tempting glimpse of what's to come. An instant first impression of spaciousness aided by the view along the corridor to the fresh interior providing functionality for day-to-day life. This opens seamlessly onto the modern integrated kitchen. Less is more is true of the simplicity here with a strong and harmonious connection between the interior and the views out towards Richmond Park and beyond. There is a spacious master bedroom with built in wardrobes and en-suite shower room, a further double bedroom and large bathroom. The flat is located on the third floor of this modern block with lift and private parking. New Malden is renowned for having a lovely atmosphere, Farmers Market and a thriving High Street with plenty of local amenities as well as the conveniences of Kingston-Upon-Thames and Wimbledon, on your doorstep. EPC Rating C. Council Tax Band D





GROUND FLOOR
669 sq.ft. (62.2 sq.m.) approx.



TOTAL FLOOR AREA : 669 sq.ft. (62.2 sq.m.) approx.

Whilst every attempt has been made to ensure the accuracy of the floorplan contained here, measurements of doors, windows, rooms and any other items are approximate and no responsibility is taken for any error, omission or mis-statement. This plan is for illustrative purposes only and should be used as such by any prospective purchaser. The services, systems and appliances shown have not been tested and no guarantee as to their operability or efficiency can be given.
Made with Metropix ©2025