

Laburnum Grove New Malden KT3

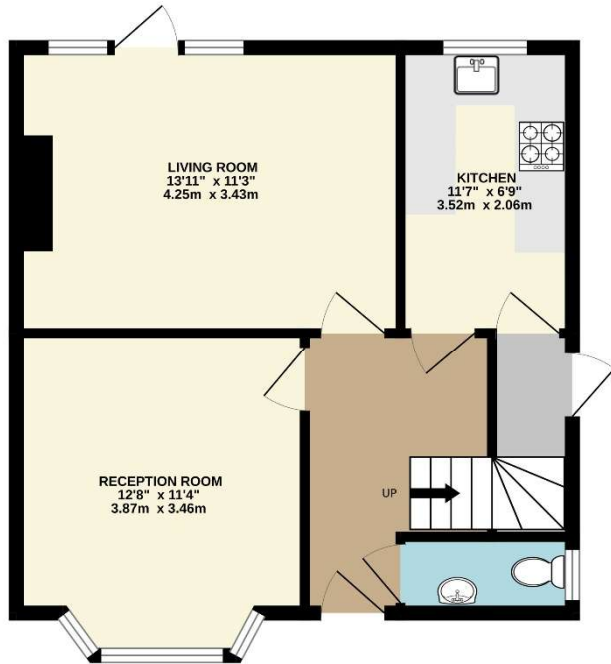


- **Four Bedrooms**
- **Catchment for Coombe Hill Schools**
- **Off Street Parking for Three Cars**
- **Large Rear Garden**

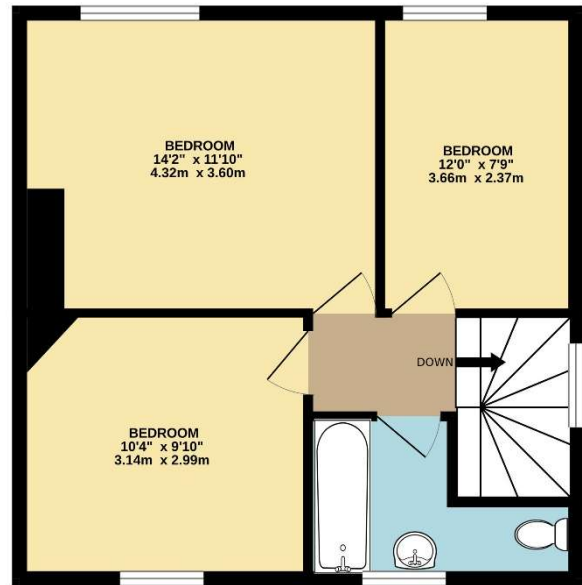
Price £3,100 pcm

A four bedroom semi detached family home located near coombe side and catchment for Coombe Hill Schools with off street parking for 3 cars. The ground floor of the property has a good size living room with direct access to the garden, a WC, modern kitchen and a versatile room that could be used as a 4th bedroom or study. the first floor has three double bedrooms, one with wardrobes and a family bathroom. The property is available now and unfurnished. EPC Rating D. Council Tax Band E. Security Deposit based upon asking price offer £3,576

GROUND FLOOR



1ST FLOOR



TOTAL FLOOR AREA : 970 sq.ft. (90.1 sq.m.) approx.

Whilst every attempt has been made to ensure the accuracy of the floorplan contained here, measurements of doors, windows, rooms and any other items are approximate and no responsibility is taken for any error, omission or mis-statement. This plan is for illustrative purposes only and should be used as such by any prospective purchaser. The services, systems and appliances shown have not been tested and no guarantee as to their operability or efficiency can be given.

Made with Metropix ©2025

