

Royal Quarter Kingston Upon Thames KT2



- **Two Double Bedrooms**
- **Private Balcony**
- **Immaculately Presented**
- **Exclusive Royal Quarter Location**
- **Concierge and On Site Gym**
- **Underground Parking**

Price £525,000

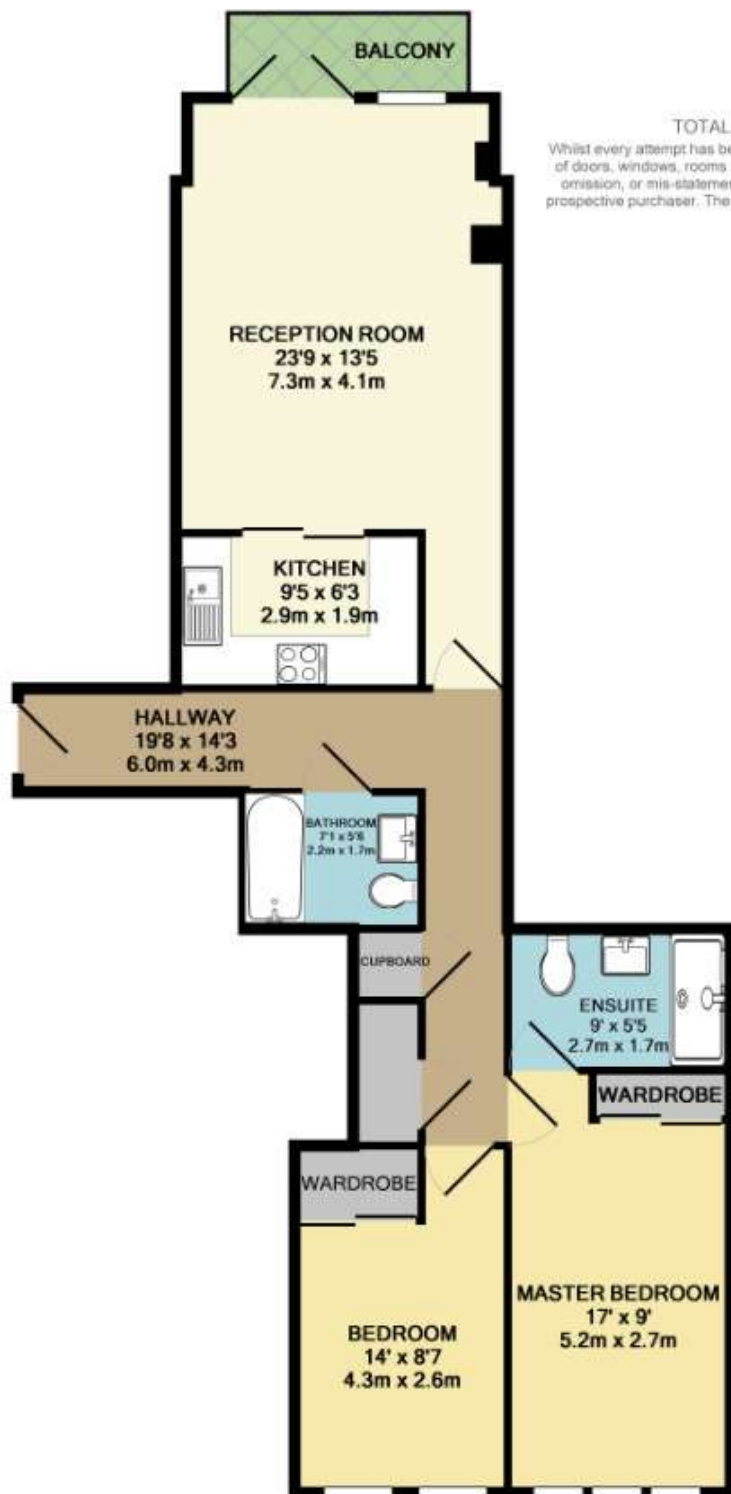
A stunning and spacious two double bedroom apartment within the highly sought after Royal Quarter development in the heart of Kingston Upon Thames, moments away from Kingston Station, as well as many shops and restaurants. With its immaculately maintained central courtyard, complimentary concierge service and on site gym, this stylish complex has a real feeling of luxury as soon as you step through the door. The apartment itself is bright and modern, comprising a kitchen and reception room separated by sliding doors, leading out onto a balcony area. There are two large double bedrooms with built in wardrobes, one with an en-suite shower room along with an additional family bathroom down the corridor. The property also benefits from two large built in storage cupboards, as well as underground parking. EPC rating B. Council tax band E.











TOTAL APPROX. FLOOR AREA 831 SQ.FT. (77.2 SQ.M.)

Whilst every attempt has been made to ensure the accuracy of the floor plan contained here, measurements of doors, windows, rooms and any other items are approximate and no responsibility is taken for any error, omission, or mis-statement. This plan is for illustrative purposes only and should be used as such by any prospective purchaser. The services, systems and appliances shown have not been tested and no guarantee as to their operability or efficiency can be given.

Made with Metropix ©2018