

Dukes Avenue New Malden KT3



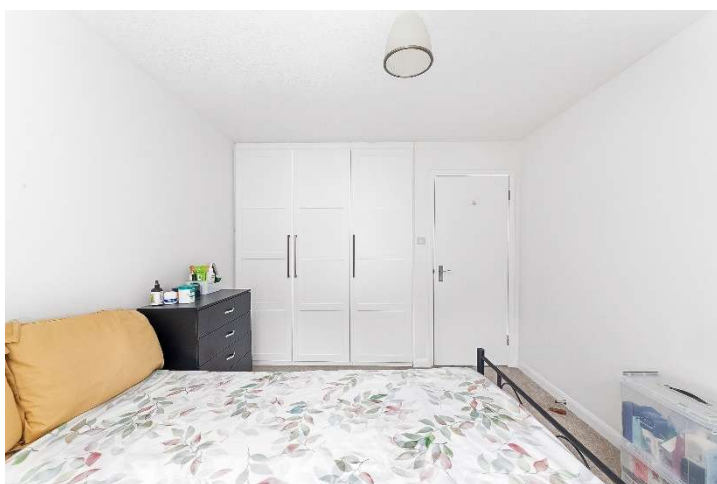
- **Recently Refurbished One Bedroom Flat**
- **Modern Fully Fitted Kitchen with Amtico Flooring**
- **Double Bedroom with Built-In Storage**
- **Communal South Facing Garden**
- **Allocated Parking Space**
- **Share of Freehold**
- **Low Maintenance Costs**

Price £350,000

Recently refurbished, to a high standard, this one bedroom first floor flat benefits from a modern fully fitted kitchen with Amtico Vinyl flooring, opening onto a spacious through-reception with zoned areas for sitting or dining with views over the well maintained south facing mature garden which provides plenty of privacy alongside the feeling of bringing the outside in; a good sized bedroom with built in wardrobes and bathroom. In addition there is good storage. Located in the ever popular 'Malden Hill' area of New Malden the position is ideal for easy access to the High Street and Station with an abundance of amenities and excellent links into Central London. Ideal for a busy First Time Buyer or an Investor. NO ONWARD CHAIN. EPC C. Council Tax band C.

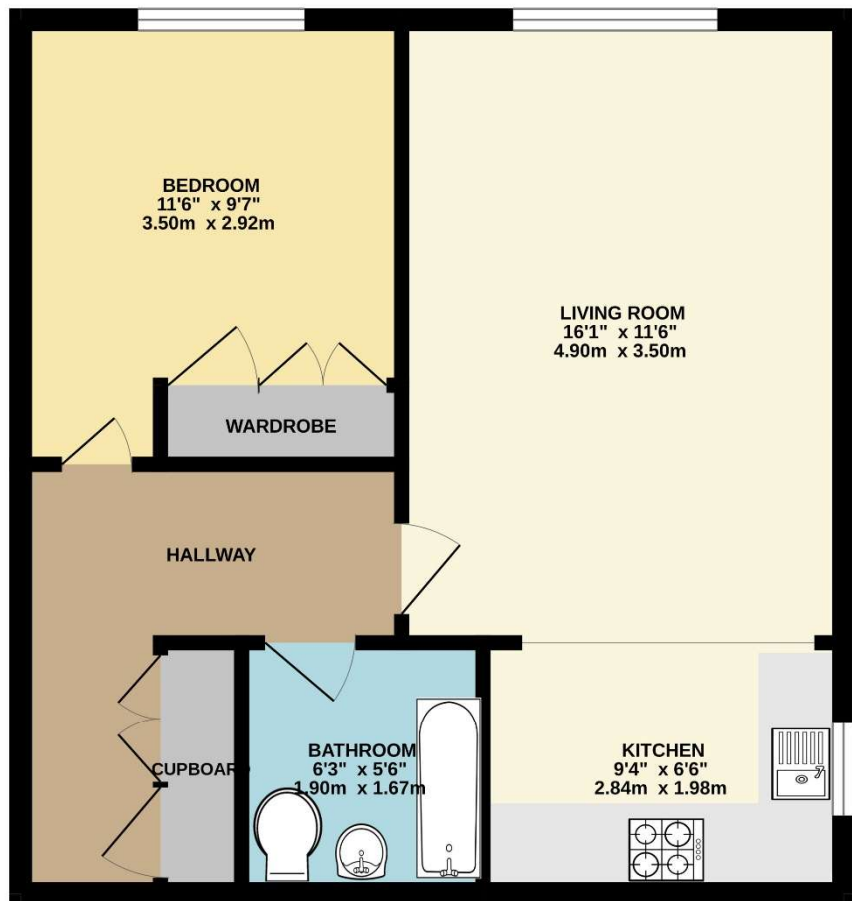








480 sq.ft. (44.6 sq.m.) approx.



TOTAL FLOOR AREA : 480 sq.ft. (44.6 sq.m.) approx.

Whilst every attempt has been made to ensure the accuracy of the floorplan contained here, measurements of doors, windows, rooms and any other items are approximate and no responsibility is taken for any error, omission or mis-statement. This plan is for illustrative purposes only and should be used as such by any prospective purchaser. The services, systems and appliances shown have not been tested and no guarantee as to their operability or efficiency can be given.

Made with Metropix ©2025