

Buxton Drive New Malden KT3



- **Five Bedroom Halls Adjoining Period House**
- **Versatile Ground Floor Living Space**
- **Desirable Coombeside Location**
- **Off Street Parking**
- **Large Rear Garden**
- **Catchment for Excellent Schools**
- **NO ONWARD CHAIN**

Price £1,375,000

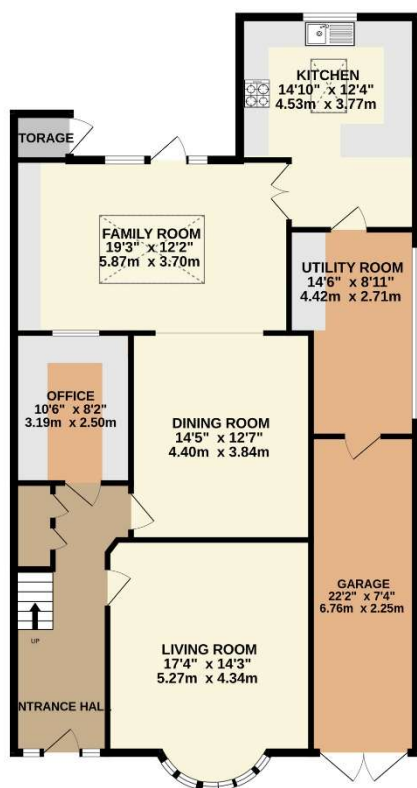
A desirable, Coombeside location; this halls adjoining, family home offers plenty of natural light, with solid oak flooring throughout. The spacious ground floor, which offers excellent accommodation throughout, but could equally be re-configured to different layout if desired. Comprising a large bay fronted living room, a separate office, dining room and an impressive family room with vaulted atrium skylight, plus direct access onto the large rear garden with Summer House. A separate fitted kitchen with a range master, an island, plus a utility room leading onto a double length garage. The first floor has two dual aspect bedrooms, a large single bedroom and well presented family shower room. On the second floor are two more double bedrooms, with plenty of storage plus within the eaves and a modern shower room. The property is located in the catchment for a number of sought after schools and within easy reach of New Malden, which is renowned for having a lovely atmosphere and a thriving community. There's plenty more on your doorstep including the majestic Richmond Park and Wimbledon Common. Sold with no onward chain this property is certainly not one to be missed. EPC rate D. Council Tax Band F.



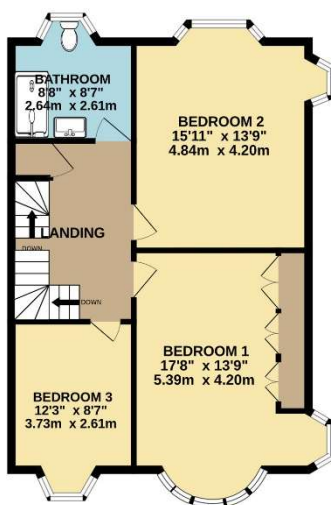




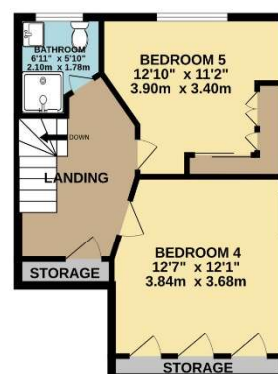
GROUND FLOOR
1319 sq.ft. (122.5 sq.m.) approx.



1ST FLOOR
663 sq.ft. (61.6 sq.m.) approx.



2ND FLOOR
428 sq.ft. (39.6 sq.m.) approx.



TOTAL FLOOR AREA: 2410 sq.ft. (223.9 sq.m.) approx.

Whilst every attempt has been made to ensure the accuracy of the floorplan contained here, measurements of doors, windows, rooms and any other items are approximate and no responsibility is taken for any error, omission or mis-statement. This plan is for illustrative purposes only and should be used as such by any prospective purchaser. The services, systems and appliances shown have not been tested and no guarantee as to their operability or efficiency can be given.
Made with Metropix ©2025