

Montem Road New Malden KT3



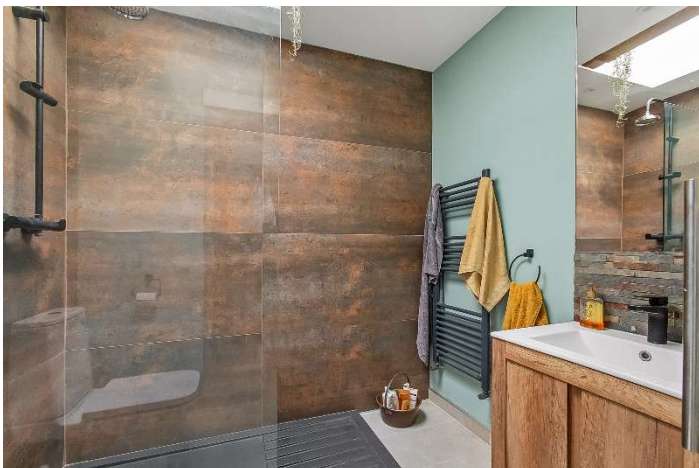
- **Ground Floor Apartment in Period Conversion**
- **Three Double Bedrooms**
- **Two Bathrooms, one En-Suite**
- **Open Plan Kitchen/Living/Dining Room**
- **Pretty West Facing Garden**
- **Close to New Malden High Street and Station**
- **Share of Freehold**

Price £675,000

If entertaining is important then this amazing three double bedroom, two bathroom, ground floor apartment hits the spot. Much care and thought has gone into the interior - aesthetically pleasing spaces that are stylish, memorable and based on optimal functionality; the epitome of personalisation, which truly reflects individuality and style. The well-proportioned, modern kitchen/dining/living area encompassing views over the pretty west facing garden. Knowing how important our relationship with outdoor space is, with this property you are not disappointed. There is a patio with lawn beyond and a natural pond, where many hours can be spent observing nature from the covered pagoda. Every bedroom is generous in size, two with high ceilings and the third with lantern window, an en-suite and access out onto a pretty courtyard. In addition, there is a main bathroom and separate garage. The property is a short walk to the High Street and local transport, plus there are green spaces nearby and the popular Beeline Way, which is a lovely walk / cycle path to Raynes Park and surrounding areas. Council Tax Band D. EPC rating TBC.









GROUND FLOOR
1167 sq.ft. (108.4 sq.m.) approx.



TOTAL FLOOR AREA : 1167 sq.ft. (108.4 sq.m.) approx.

Whilst every attempt has been made to ensure the accuracy of the floorplan contained here, measurements of doors, windows, rooms and any other items are approximate and no responsibility is taken for any error, omission or mis-statement. This plan is for illustrative purposes only and should be used as such by any prospective purchaser. The services, systems and appliances shown have not been tested and no guarantee as to their operability or efficiency can be given.
Made with Metropix ©2025