

Alexander House Kingston Upon Thames KT2



- **One Double Bedroom Apartment**
- **Large Living Room with Balcony**
- **Modern Fitted Kitchen**
- **Good Size Bathroom**
- **Private Parking. Lift**
- **Close to Station and River**

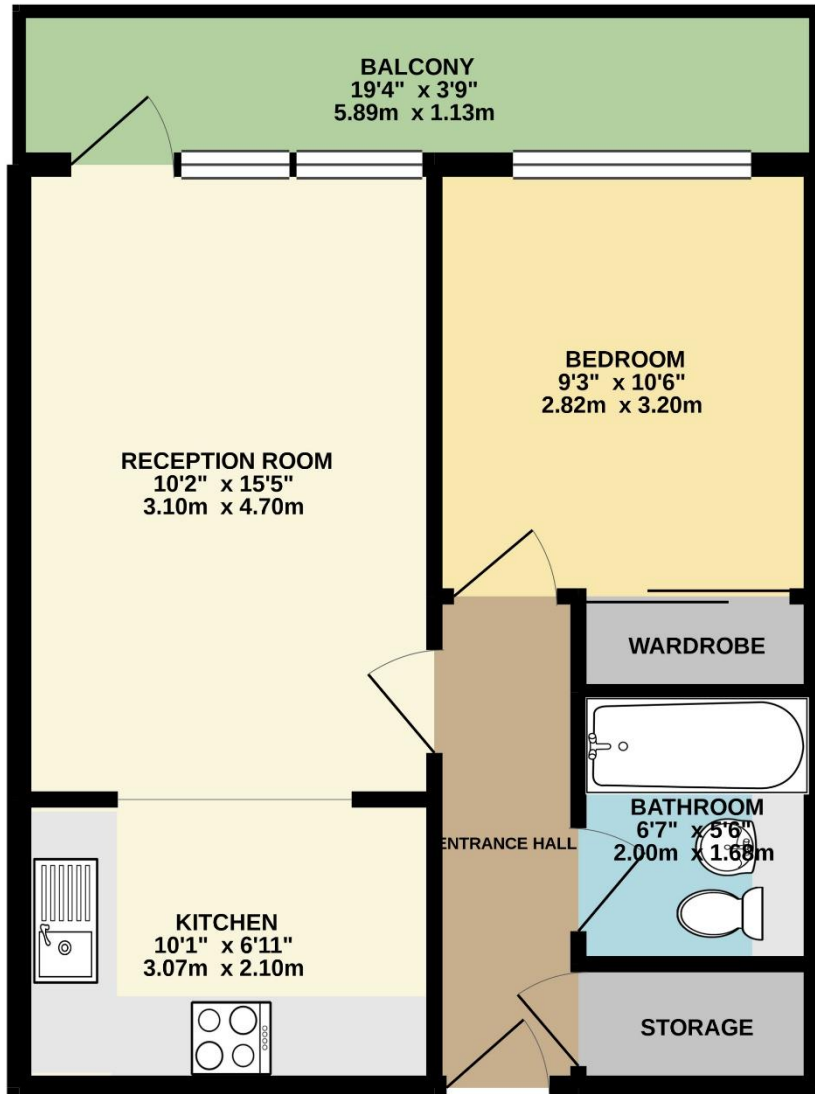
Price £349,950

Set on the sixth floor (with a lift) of this very popular modern development, a smartly presented apartment with the benefit of secured parking. The accommodation comprises a good size living room which opens out to a balcony and also opens into a fitted kitchen, a double bedroom with built-in wardrobe and a good size bathroom. The development is located within minutes of Kingston town centre and station and just a short walk to the river. EPC rating C. Council tax band D. NO ONWARD CHAIN





SIXTH FLOOR
432 sq.ft. (40.1 sq.m.) approx.



TOTAL FLOOR AREA : 432 sq.ft. (40.1 sq.m.) approx.

Whilst every attempt has been made to ensure the accuracy of the floorplan contained here, measurements of doors, windows, rooms and any other items are approximate and no responsibility is taken for any error, omission or mis-statement. This plan is for illustrative purposes only and should be used as such by any prospective purchaser. The services, systems and appliances shown have not been tested and no guarantee as to their operability or efficiency can be given.
Made with Metropix ©2021