

Leyfield Worcester Park KT4



- Three Bedroom Older Style House
- Spacious Ground Floor
- Downstairs WC
- Potential to Extend (STPP)
- Garage
- Off Street Parking

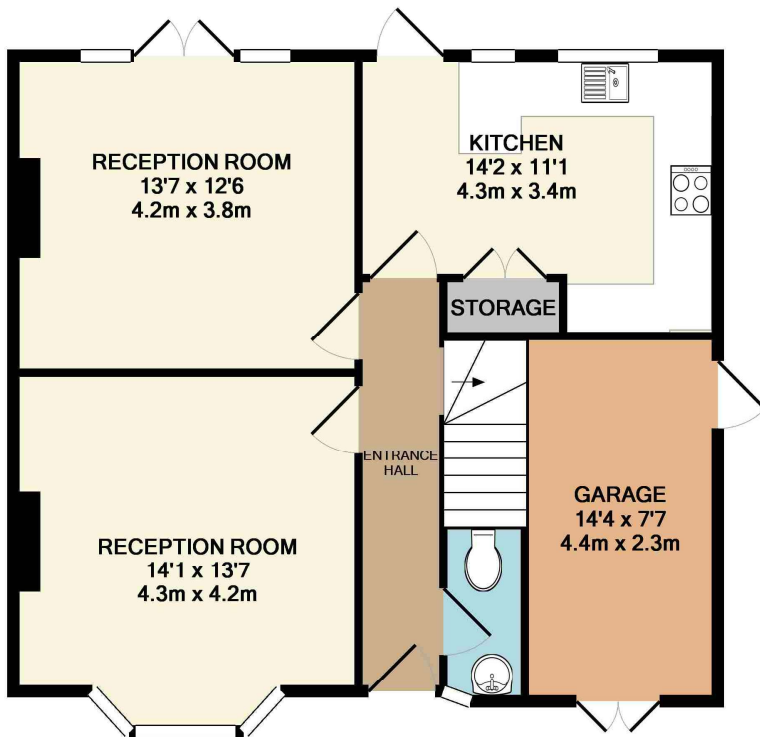
Price £800,000

A well proportioned semi-detached family home which offers plenty of potential to add your own personality or the ability to extend, to the side, rear and into the loft (STPP). The property comprises two decent sized reception rooms, a large kitchen with a breakfast bar and downstairs WC. On the first floor there are three spacious bedrooms and a family bathroom. In addition, the property benefits from off street parking for several cars, garage with electricity and a large garden with a side access. Located in a popular part of Worcester Park with easy access to several stations. NO ONWARD CHAIN. EPC rating D. Council Tax Band F.

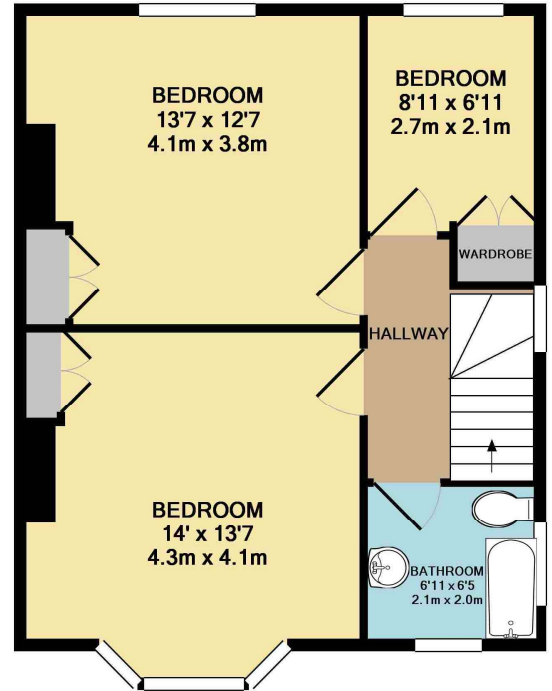








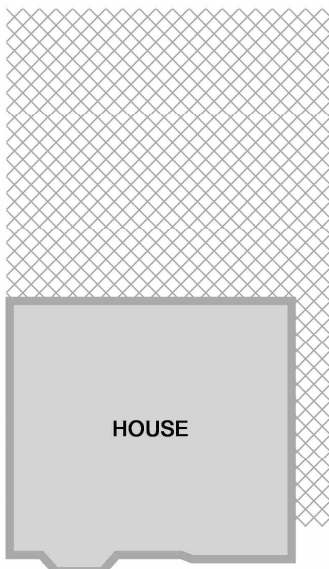
GROUND FLOOR
APPROX. FLOOR
AREA 701 SQ.FT.
(65.1 SQ.M.)



1ST FLOOR
APPROX. FLOOR
AREA 511 SQ.FT.
(47.5 SQ.M.)

TOTAL APPROX. FLOOR AREA 1212 SQ.FT. (112.6 SQ.M.)

Whilst every attempt has been made to ensure the accuracy of the floor plan contained here, measurements of doors, windows, rooms and any other items are approximate and no responsibility is taken for any error, omission, or mis-statement. This plan is for illustrative purposes only and should be used as such by any prospective purchaser. The services, systems and appliances shown have not been tested and no guarantee as to their operability or efficiency can be given
Made with Metropix ©2019



SITE PLAN