

## Blagdon Road New Malden KT3



- **Modern Luxury One Bedroom Flat**
- **Open Plan Kitchen/Living/Dining Room**
- **Central New Malden Location**
- **Concierge and Two Lifts**
- **Balcony**
- **Private Parking Space**

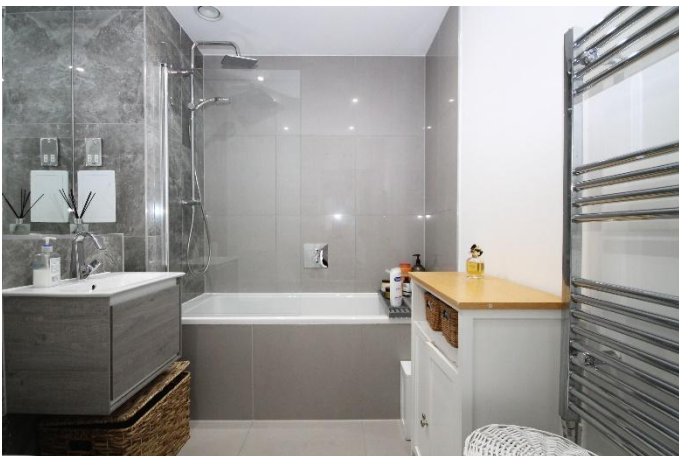
**Price £375,000**

Light-filled, spacious, generously proportioned, luxury, modern one-bedroom flat located in an enviable central New Malden location with the benefits of a concierge and two lifts making it a perfect property for busy people. Finished to a high standard including underfloor heating in the bathroom and a good-sized bedroom, this flat has a superb open plan reception/kitchen/dining room with ample space for someone juggling remote working. In addition the private balcony provides a welcome through-flow of air and welcomes the outside in. The development is located in the heart of New Malden just a few steps from the High Street and a short walk to the station with excellent to central London. EPC C Council tax band C.

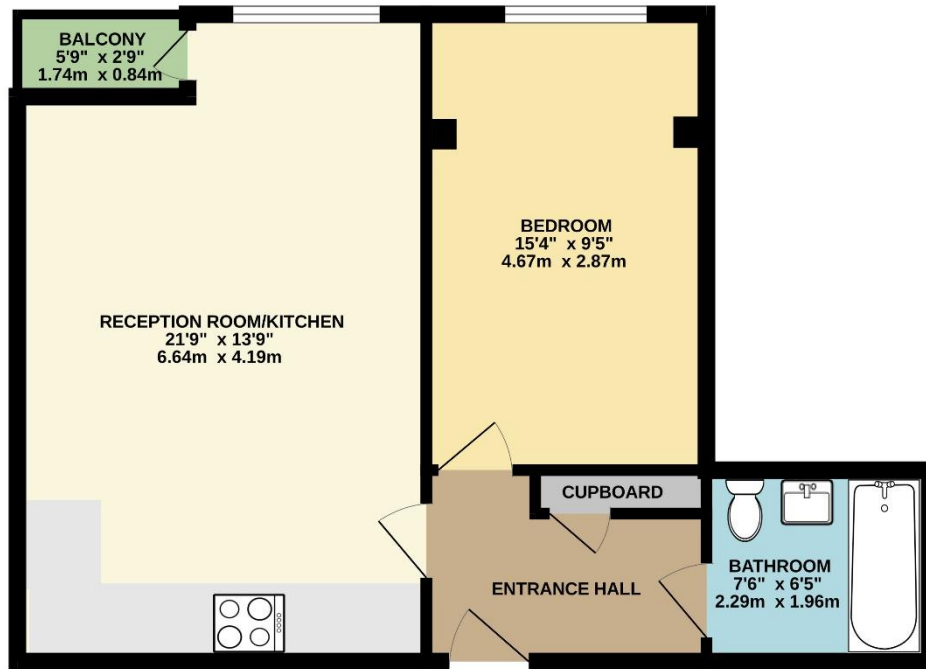








2ND FLOOR  
535 sq.ft. (49.7 sq.m.) approx.



TOTAL FLOOR AREA : 535 sq.ft. (49.7 sq.m.) approx.

Whilst every attempt has been made to ensure the accuracy of the floorplan contained here, measurements of doors, windows, rooms and any other items are approximate and no responsibility is taken for any error, omission or mis-statement. This plan is for illustrative purposes only and should be used as such by any prospective purchaser. The services, systems and appliances shown have not been tested and no guarantee as to their operability or efficiency can be given.

Made with Metropix ©2025