

Aboyne Drive London SW20

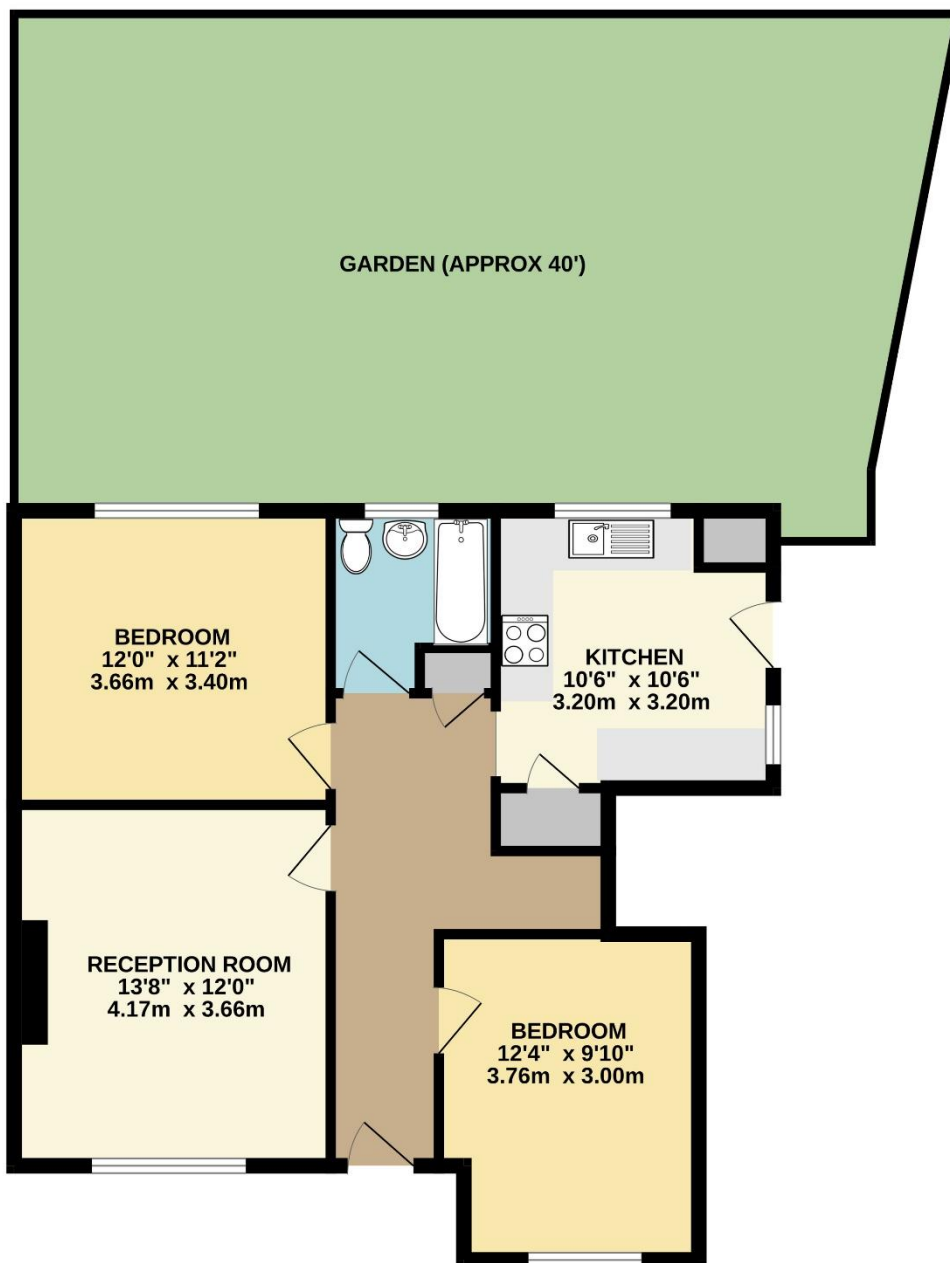


- **Two Double Bedrooms**
- **Large Reception Room**
- **Modern Fitted Kitchen**
- **Private Rear Garden**
- **Superb Condition**
- **Available Now**

Price £2,300 pcm

A beautifully presented ground floor maisonette with excellent space throughout. The accommodation comprises a large living room, a modern fitted kitchen, two double bedrooms and bathroom as well as good storage and there is also a wonderful rear garden with a large patio area and lawn. The property is located within a short distance of both Raynes Park and New Malden as well as good road access both into London and out of town. This apartment is unfurnished and available now. Security deposit £2,653 (based on the asking price). Council tax band C. EPC rating D.

GROUND FLOOR



TOTAL FLOOR AREA : 714sq.ft. (66.3 sq.m.) approx.

Whilst every attempt has been made to ensure the accuracy of the floorplan contained here, measurements of doors, windows, rooms and any other items are approximate and no responsibility is taken for any error, omission or mis-statement. This plan is for illustrative purposes only and should be used as such by any prospective purchaser. The services, systems and appliances shown have not been tested and no guarantee as to their operability or efficiency can be given.
Made with Metropix ©2026



