

## Van Dyck Avenue New Malden KT3



- **Detached Three Bedroom Family House**
- **Bright Reception rooms**
- **Downstairs W.C**
- **Parking for Several Cars**
- **Large Rear Garden**
- **Chain Free**

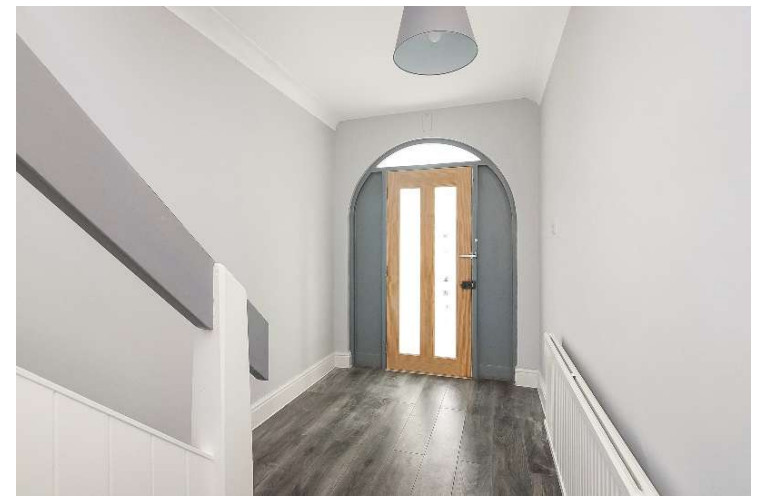
**Price £765,000**

This bright, generously proportioned, three-bedroom, detached house offers expansive living space and exceptional parking, including a private driveway for several cars and a separate rear garage. The ground floor opens into a spacious, light-filled hallway that leads into two bright living rooms. The second providing continuous movement and natural light, giving seamless views over the mature rear garden, making this feel like the central hub. Positioned just off this living area is a double-length galley-style kitchen with convenient side access, alongside a practical downstairs W.C. Upstairs, the first floor features a large master bedroom with extensive built-in wardrobes, a second double bedroom, and a versatile single room, all served by a functional family bathroom and separate W.C. Located in the highly sought-after "Painters" area of New Malden, the property is perfectly positioned for families, offering easy access to local schools and excellent transport links. EPC D. Council Tax Band F.

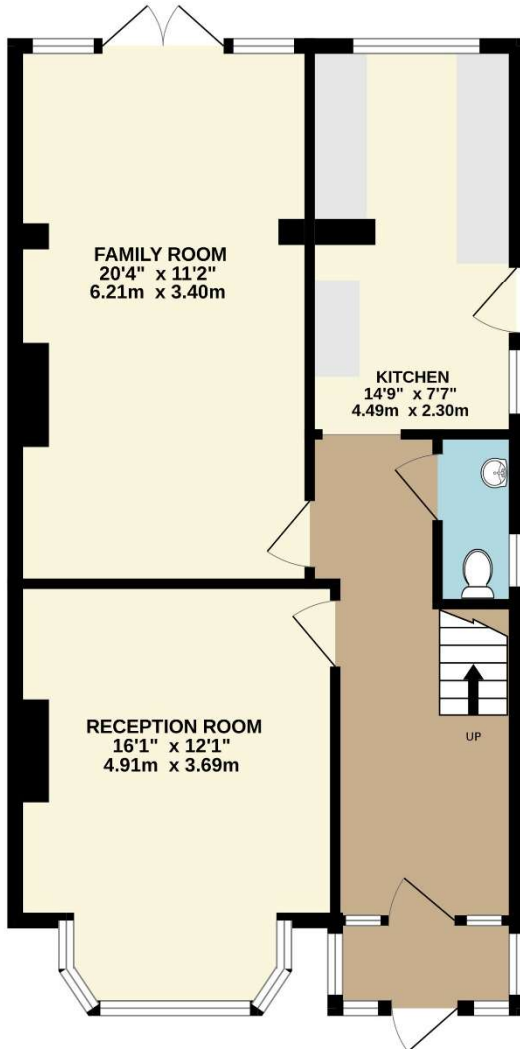




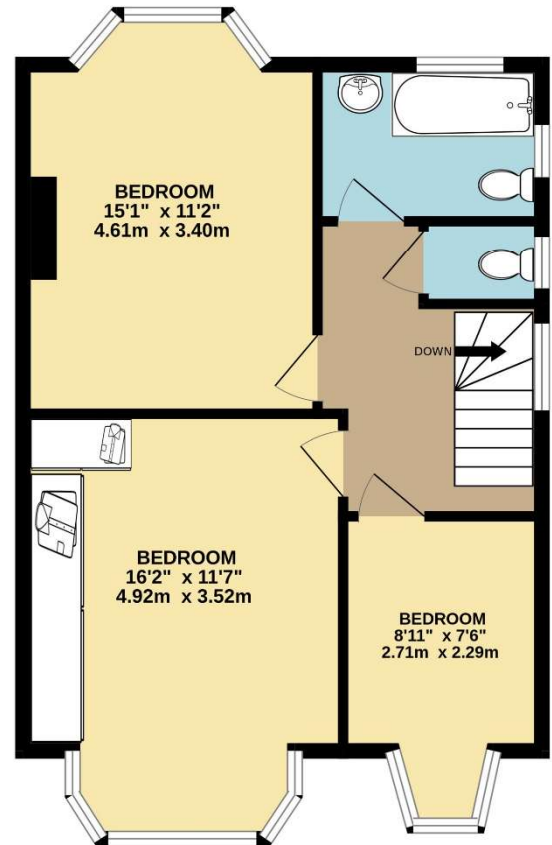




GROUND FLOOR



1ST FLOOR



TOTAL FLOOR AREA : 1211 sq.ft. (112.5 sq.m.) approx.

Whilst every attempt has been made to ensure the accuracy of the floorplan contained here, measurements of doors, windows, rooms and any other items are approximate and no responsibility is taken for any error, omission or mis-statement. This plan is for illustrative purposes only and should be used as such by any prospective purchaser. The services, systems and appliances shown have not been tested and no guarantee as to their operability or efficiency can be given.  
Made with Metropix ©2026