

Chestnut Grove New Malden KT3

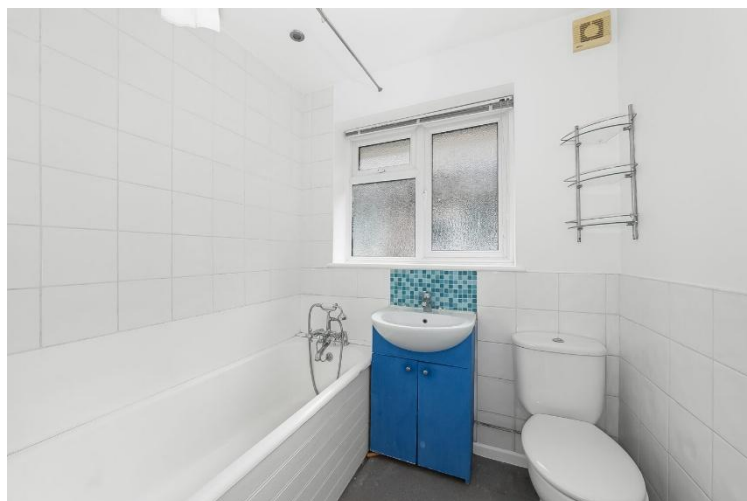


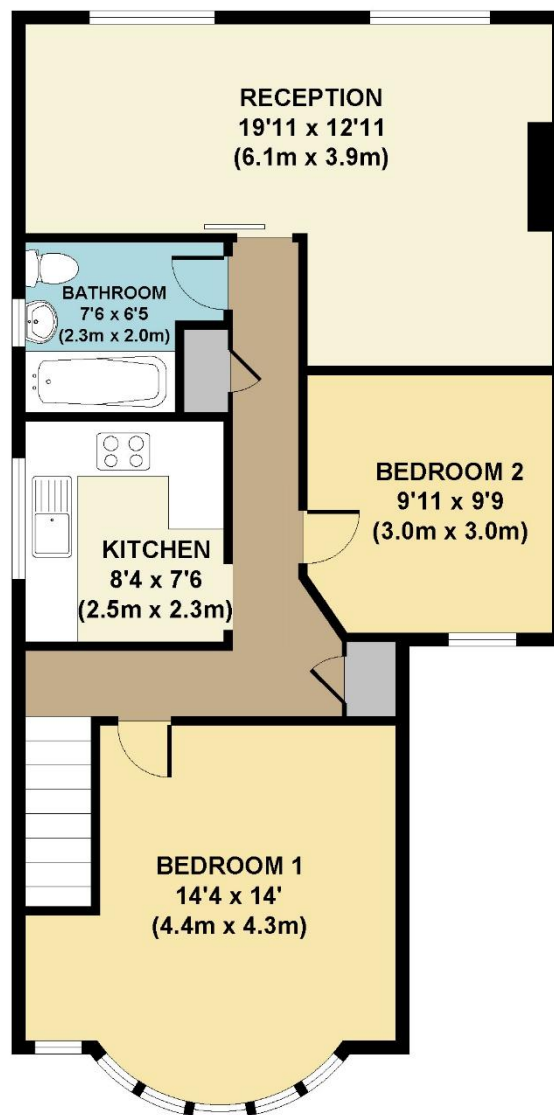
- **Spacious Two Bedroom, first floor maisonette**
- **Recently re-decorated**
- **In the heart of "The Groves"**
- **Private garden**
- **No onward chain**

Price £425,000

A recently redecorated, spacious, two-bedroom, first-floor maisonette; ideally located in the heart of the highly sought-after Groves area. The property benefits from its own private garden, offering a perfect blend of comfort and outdoor space. A great property for investment or as a starter home. Within walking distance to the eclectic high street, local transport and schools. EPC rating D, Council Tax Band C







GROSS INTERNAL
FLOOR AREA 651 SQ FT

APPROX. GROSS INTERNAL FLOOR AREA 651 SQ FT / 61 SQ M
Floorplans are for identification and guideline purposes only, not to scale.
Compliant with RICS code of measuring practice.
Floorplans supplied by www.draftingfloorplan.com