

To Let ·

Myrtle Grove

New Malden, KT3

A wonderful and spacious FOUR BEDROOM FAMILY HOME with parking and located close to EXCELLENT LOCAL SCHOOLS

£3,200 pcm

4 Bedrooms

1216 sqft (113

EPC D

Unfurnished



Key features

◆ Four Bedroom Family Home

◆ Modern Kitchen

◆ Ground Floor

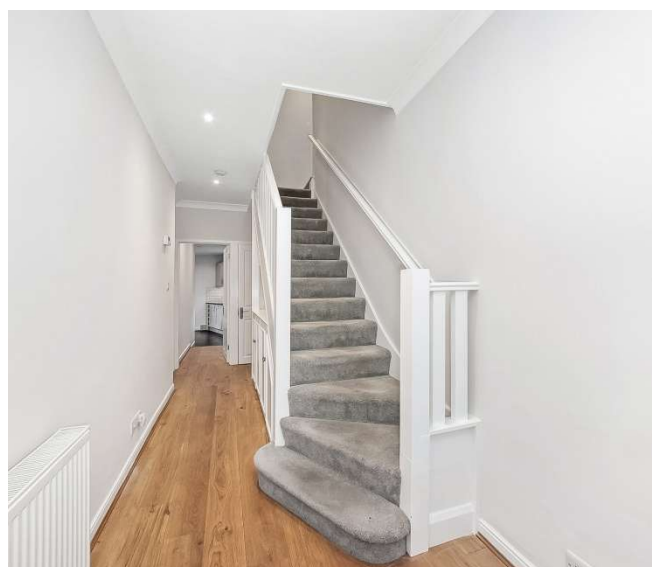
◆ Spacious Ground Floor

◆ Off-Street Parking

◆ Available Now



XXXXXXXXXXXXXXXXXXXX



XXXXXXXXXXXXXXXXXXXX



Terrace

A modern and beautifully presented four bedroom family home offering excellent accommodation throughout. There is an open plan reception and dining room with direct access to a modern fully fitted kitchen including an island; there is also the added benefit of a downstairs shower and WC. Upstairs there are three double bedrooms, a single bedroom with built-in wardrobes and a family bathroom and to the rear of the property is a well maintained, large garden with a large shed at the end which has electricity. The property is walking distance to transport links as well as Coombe Girls School. Available now and unfurnished. Security deposit £3,692 (based on the asking price). Council tax band E. EPC rating D.

Rent	£3,200 pcm
Security deposit	£3,692.00 (5 weeks' rent)
Available from	NOW
Furnishing	Unfurnished
EPC rating	D
Council tax	Band E · Royal Borough Of Kingston Upon Thames

Arrange a viewing

Viewings are by appointment – early enquiry advised

020 8949 0094

mail@grovesresidential.com



Groves Residential (UK) Ltd Registered in England & Wales company number 816 2455 Vat no: 996646252.