

Barton Green New Malden KT3

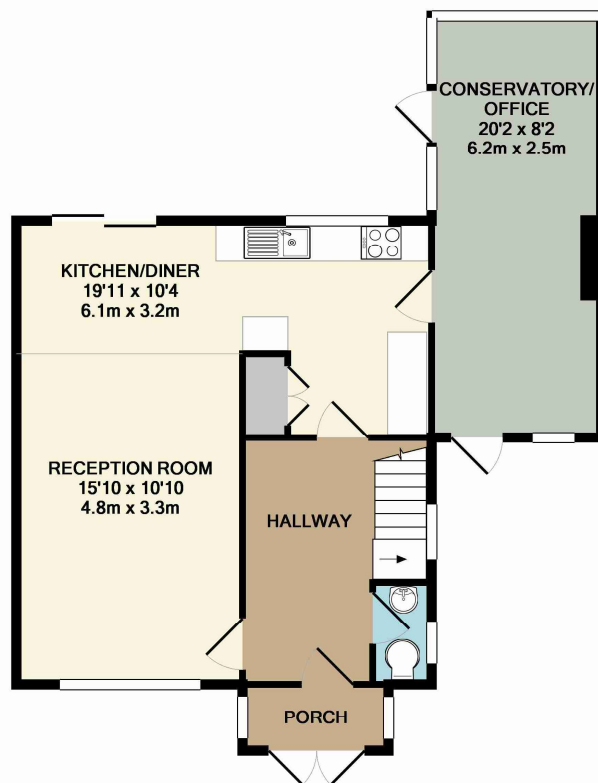


- **Three Double Bedrooms**
- **Through Reception plus Conservatory**
- **Off-Street Parking For Several Cars**
- **60ft Garden**

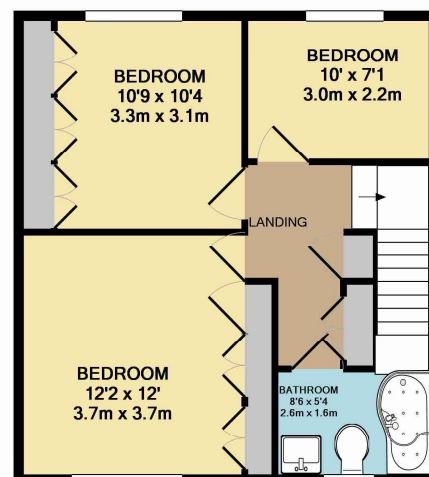
Price £2,600 pcm

A beautifully presented semi-detached house with three bedrooms and a through living room plus a conservatory extension providing great additional living space. The house has a super 60ft rear garden and off-street parking to the front of the house for several vehicles as well as a car port. Located in this quiet road close to several excellent schools including Coombe Hill and Coombe Girls. The house is available from mid August and is unfurnished. Security deposit £3,000 (based on the asking price). Council tax band E. EPC Rating Band D





GROUND FLOOR
APPROX. FLOOR
AREA 624 SQ.FT.
(58.0 SQ.M.)



1ST FLOOR
APPROX. FLOOR
AREA 442 SQ.FT.
(41.0 SQ.M.)

TOTAL APPROX. FLOOR AREA 1066 SQ.FT. (99.0 SQ.M.)

Whilst every attempt has been made to ensure the accuracy of the floor plan contained here, measurements of doors, windows, rooms and any other items are approximate and no responsibility is taken for any error, omission, or mis-statement. This plan is for illustrative purposes only and should be used as such by any prospective purchaser. The services, systems and appliances shown have not been tested and no guarantee as to their operability or efficiency can be given
Made with Metropix ©2013





