

Montem Road New Malden KT3

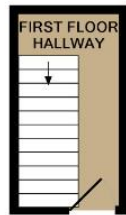


- **Two Good Size Bedrooms**
- **Large Living Room**
- **Spacious Kitchen**

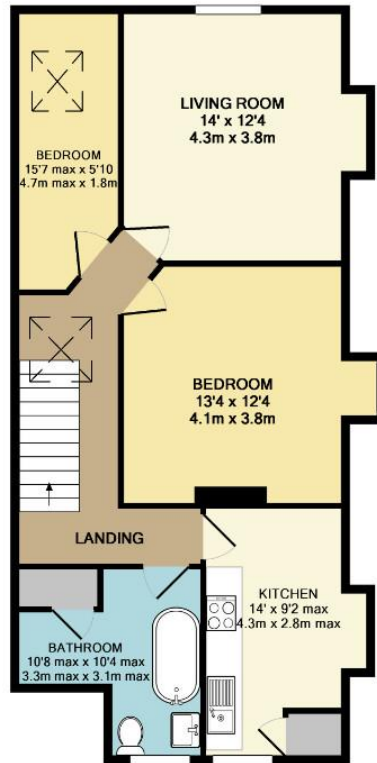
Price £1,650 pcm

Groves Residential are delighted to bring to the lettings market this beautifully presented two bedroom split level flat in the heart of New Malden. This property is ideal to accommodate modern living whilst keeping the character and charm of the Victorian property in which it is housed. The kitchen is fully fitted with gas oven and hob as well as dishwasher and washing machine. The bathroom has an elegant free-standing bath as well as a separate shower cubicle. Situated off the landing there are two bedrooms and a large living room. Throughout the flat the sky lights and large windows give the property a light and fresh feel. This property is ideal for a professional couple, unfurnished and available now and is perfectly located in this popular road just a short walk from the High Street and station. EPC rating D. Council Tax Band C, Security Deposit based upon an asking price offer £1,903





1ST FLOOR
APPROX. FLOOR
AREA 66 SQ.FT.
(6.2 SQ.M.)



2ND FLOOR
APPROX. FLOOR
AREA 744 SQ.FT.
(69.1 SQ.M.)

TOTAL APPROX. FLOOR AREA 811 SQ.FT. (75.3 SQ.M.)

Whilst every attempt has been made to ensure the accuracy of the floor plan contained here, measurements of doors, windows, rooms and any other items are approximate and no responsibility is taken for any error, omission, or misstatement. This plan is for illustrative purposes only and should be used as such by any prospective purchaser. The services, systems and appliances shown have not been tested and no guarantee as to their operability or efficiency can be given.

Made with Metropix ©2014



