

Sycamore Grove New Malden KT3

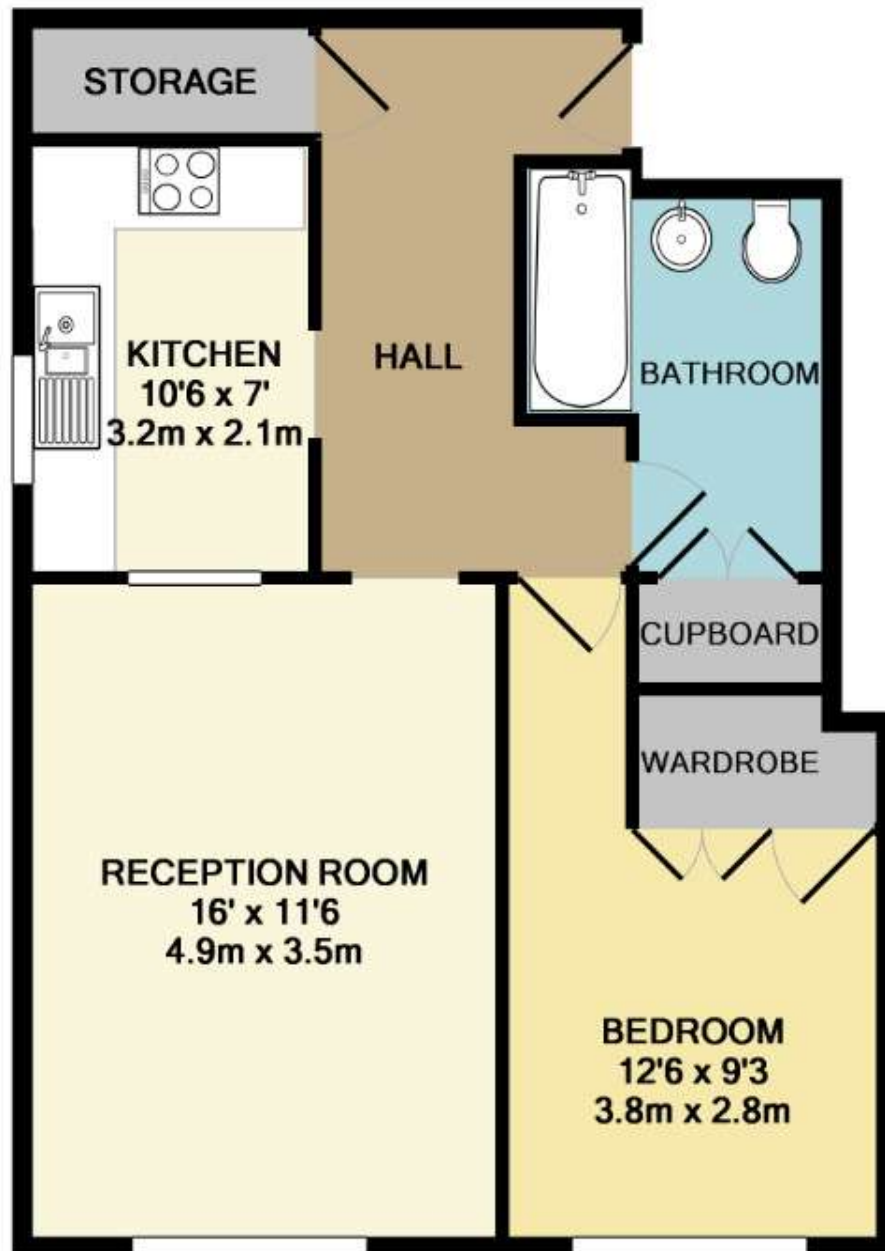


- **Stunning Modern Apartment**
- **Large Double Bedroom**
- **Stunning Kitchen and Bathroom**

Price £1,500 pcm

Located in the popular "Groves" area of New Malden, a modern apartment located just a short walk from the station and High Street. The flat comprises a large living room, a good size double bedroom with built-in wardrobes, a beautifully fitted kitchen and a bathroom with white suite and there is the added benefit of communal gardens and unallocated residents parking to the rear. The property can be let unfurnished or part-furnished and is available early-mid September. Security deposit £1,730. Council tax band C. EPC rating D.





TOTAL APPROX. FLOOR AREA 575 SQ.FT. (53.4 SQ.M.)

Whilst every attempt has been made to ensure the accuracy of the floor plan contained here, measurements of doors, windows, rooms and any other items are approximate and no responsibility is taken for any error, omission, or mis-statement. This plan is for illustrative purposes only and should be used as such by any prospective purchaser. The services, systems and appliances shown have not been tested and no guarantee as to their operability or efficiency can be given

Made with Metropix ©2012



