

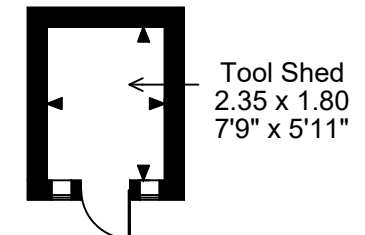
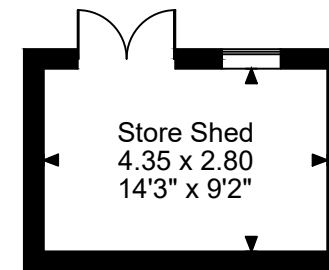
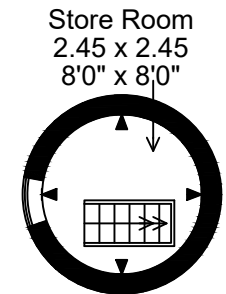
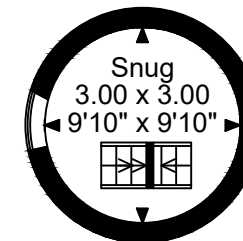
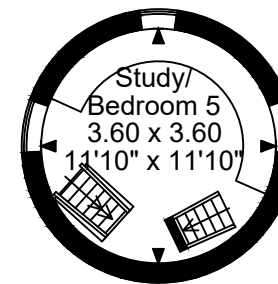
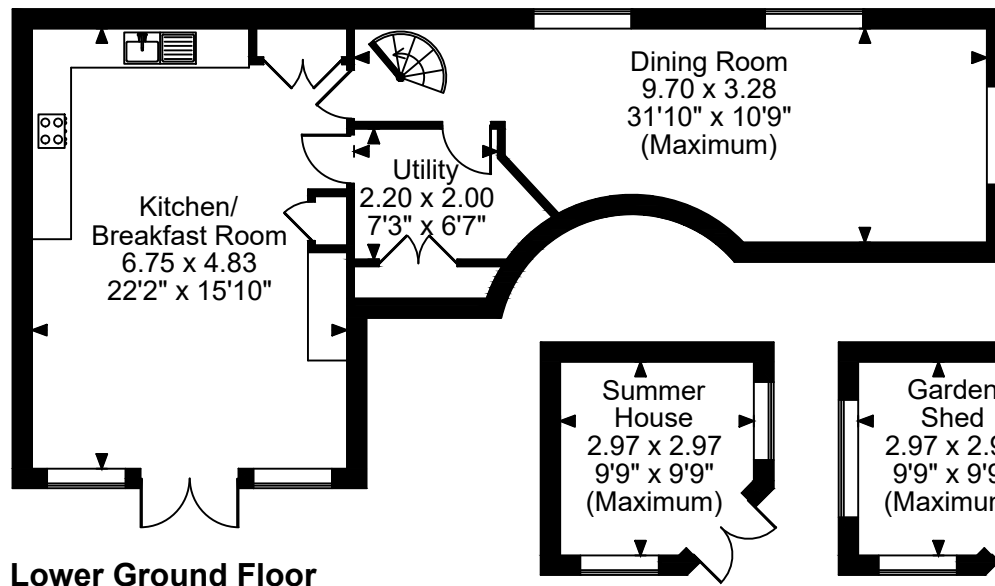
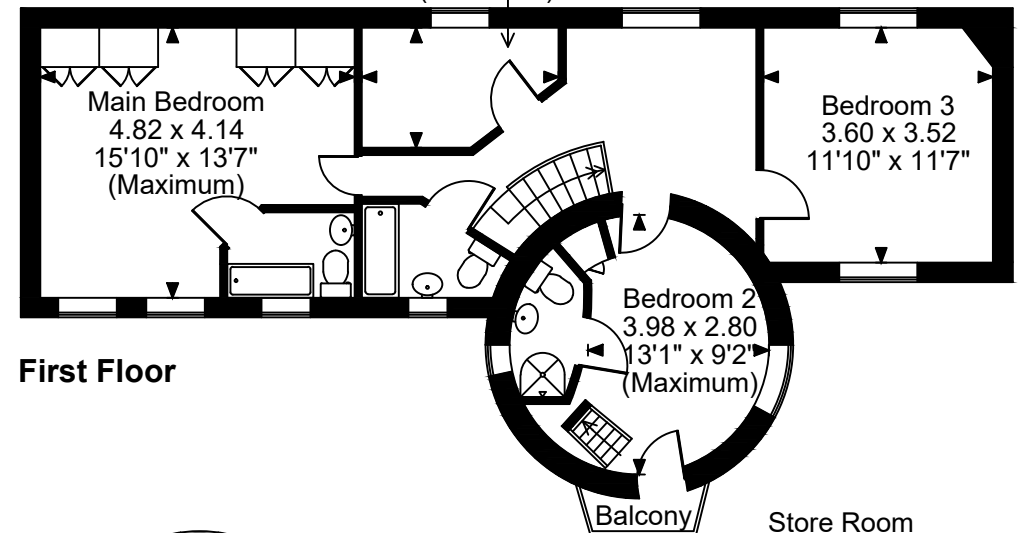
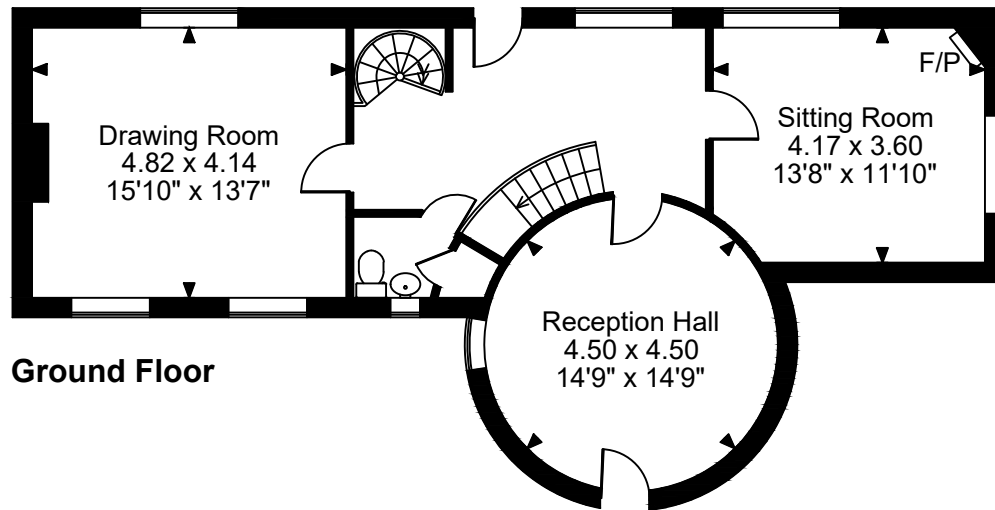
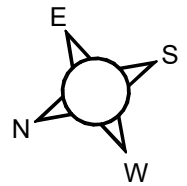
The Windmill, Rays Hill, Braziers End, Chesham

Approximate Gross Internal Area

Main House = 2404 Sq Ft/223 Sq M

Outbuildings = 353 Sq Ft/33 Sq M

Total = 2757 Sq Ft/256 Sq M



FOR ILLUSTRATIVE PURPOSES ONLY - NOT TO SCALE

The position & size of doors, windows, appliances and other features are approximate only.

© ehouse. Unauthorised reproduction prohibited. Drawing ref. dig/8649523/DGO