

Like what you see?

To view or offer, call the @HOME team on 01403 886288



Need help with mortgages? We have access to the whole of the market. This means that we can source you the best deals available. Speak to our specialist on 07557 686383.

Need help with the legal bit? We work closely with local conveyancing solicitors and cost effective, remotely based conveyancers. Whatever your need we can help.

Offers between £140,000 and £150,000

Leasehold



Chesterton Court,
Roffey,
Horsham,
RH13 6SP

- 2 Bedrooms
- Retirement development
- Regular social events
- Aged 55+ development
- Virtual Tour Available
-

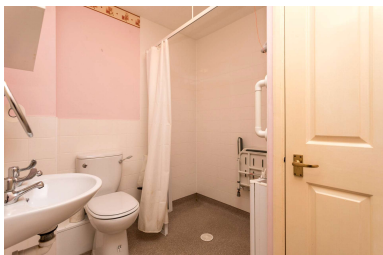
01403 886288

help@athomeestates.co.uk

Always upfront about pricing.

Take the Virtual Tour!



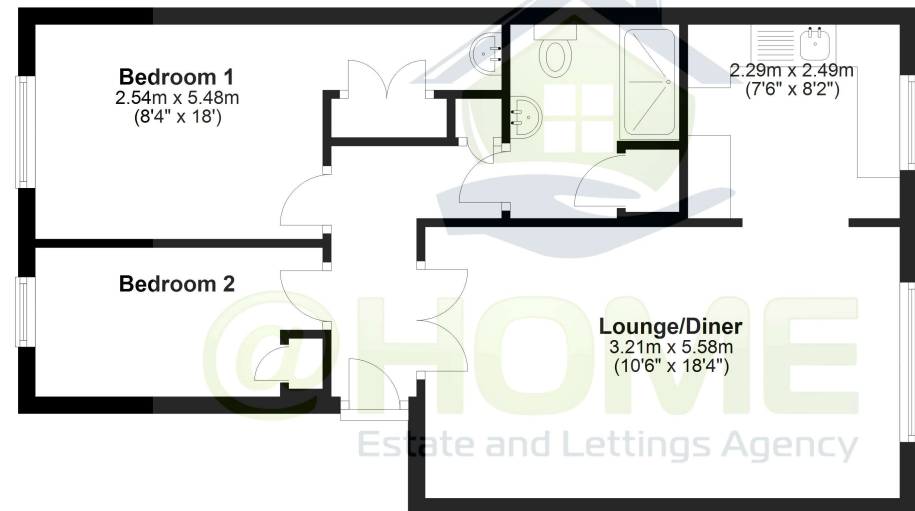


2 bedroom retirement property for people over the age of 55. The development is a great place for later years with their shared facilities, such as a communal lounge, on-site laundry, well maintained landscaped gardens, a guest room and parking spaces. There is an estate manager and regular social events are run, such coffee mornings and games evenings.

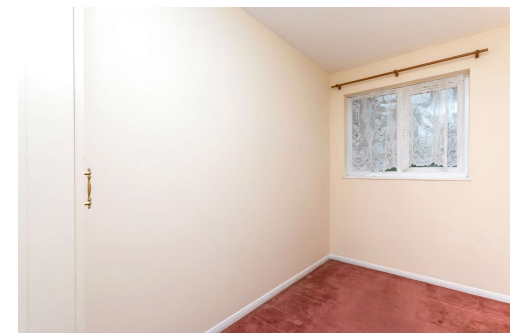
- 2 bedroom
- retirement development
- maintained gardens
- independent living yet communal facilities also on offer

Ground Floor

Approx. 51.4 sq. metres (553.4 sq. feet)



The property offers 2 bedrooms, lounge/diner, kitchen and bathroom. The development is the real attraction, with some of the features mentioned above and the quick access to shops, cinema, town centre, bus routes, post office and hairdressers.



 rightmove.co.uk

Zoopla

 primelocation.com

Service charge: £216.74 monthly

Lease: 66 years