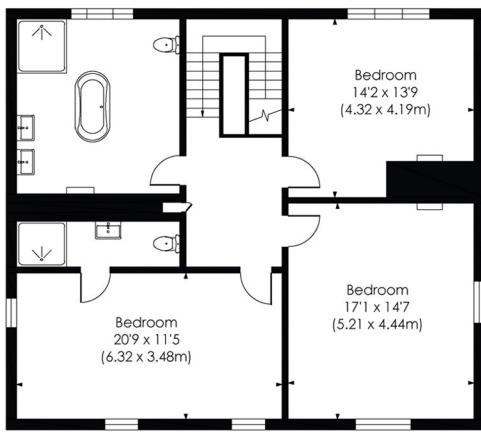


COLLEGE ROAD, SE21

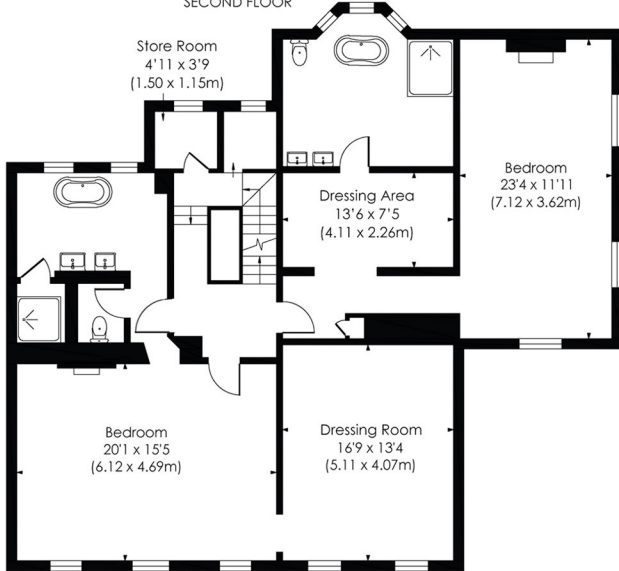
Approx. Gross Internal Floor Area

5762 Sq. ft/535.32 Sq. m

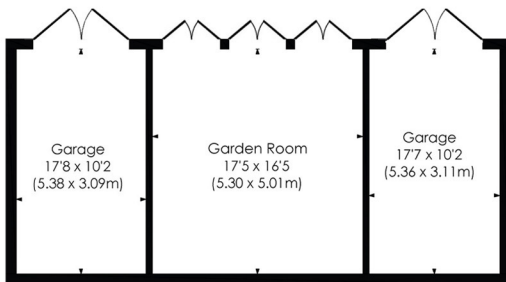
666 Sq. ft/61.92 Sq. m (Outbuilding)



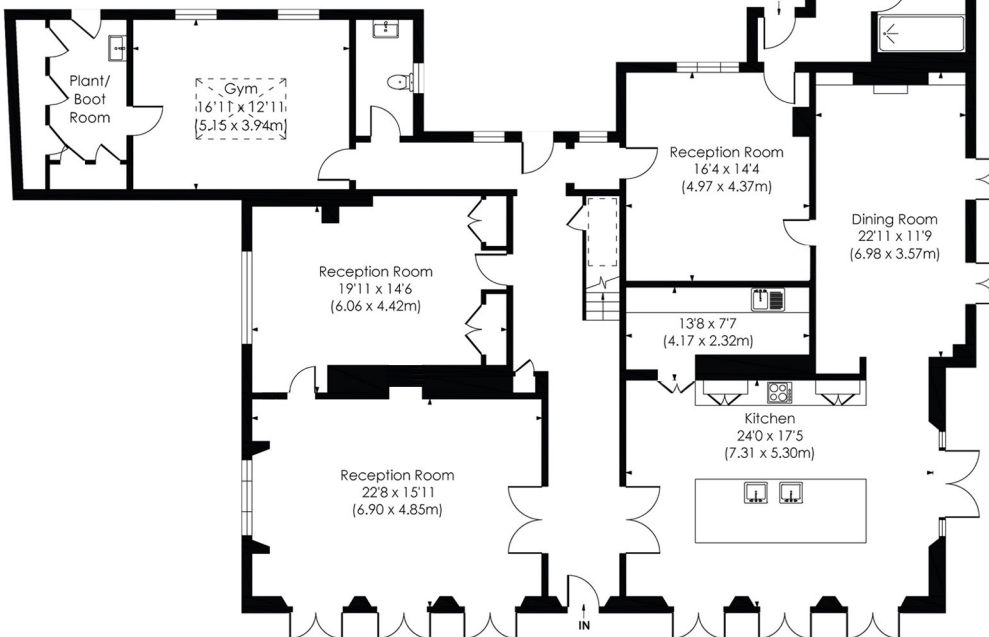
SECOND FLOOR



FIRST FLOOR



GROUND FLOOR



GROUND FLOOR

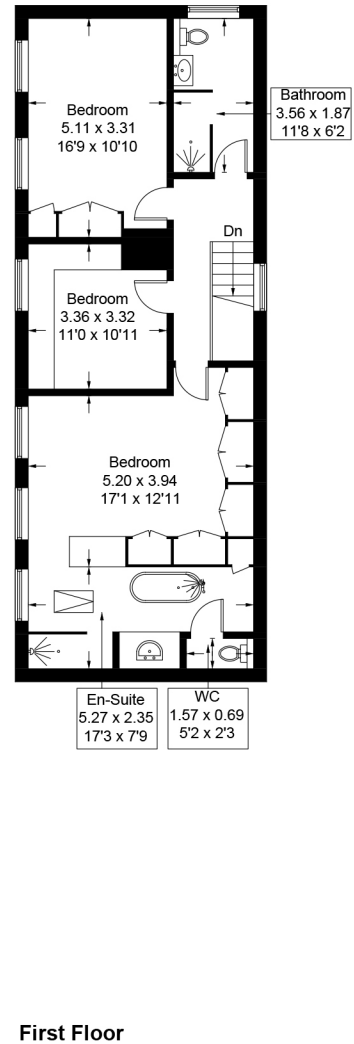
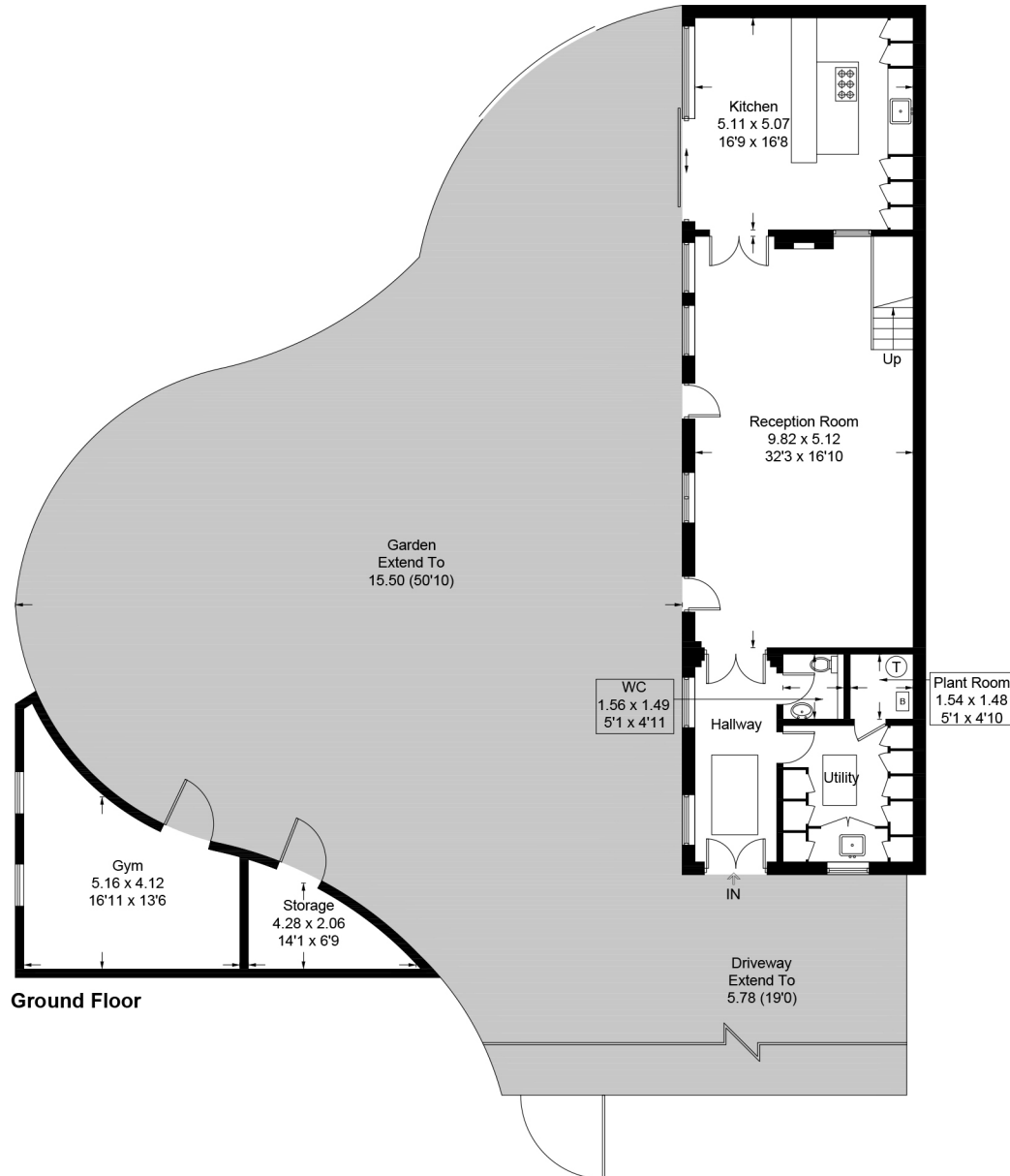
This floor plan has been prepared for the purpose of illustration only in accordance with the latest RICS code of measuring practice and is not to scale. All measurements are approximate and whilst every effort has been made to ensure the accuracy of the plan contained here, no responsibility is taken for any error, omission or misstatement.

College Road, SE21

Approximate Gross Internal Area = 183.4 sq m / 1974 sq ft

Gym & Storage = 27.4 sq m / 295 sq ft

Total = 210.8 sq m / 2269 sq ft



This plan is for layout guidance only. Not drawn to scale unless stated. Windows and door openings are approximate. Whilst every care is taken in the preparation of this plan, please check all dimensions, shapes and compass bearings before making any decisions reliant upon them. (ID1173017)

